

APP CRS	Rwy Ldg	11002
212°	TDZE	2346
	Apt Elev	2385

RNAV (RNP) Z RWY 21

SPOKANE INTL (GEG)

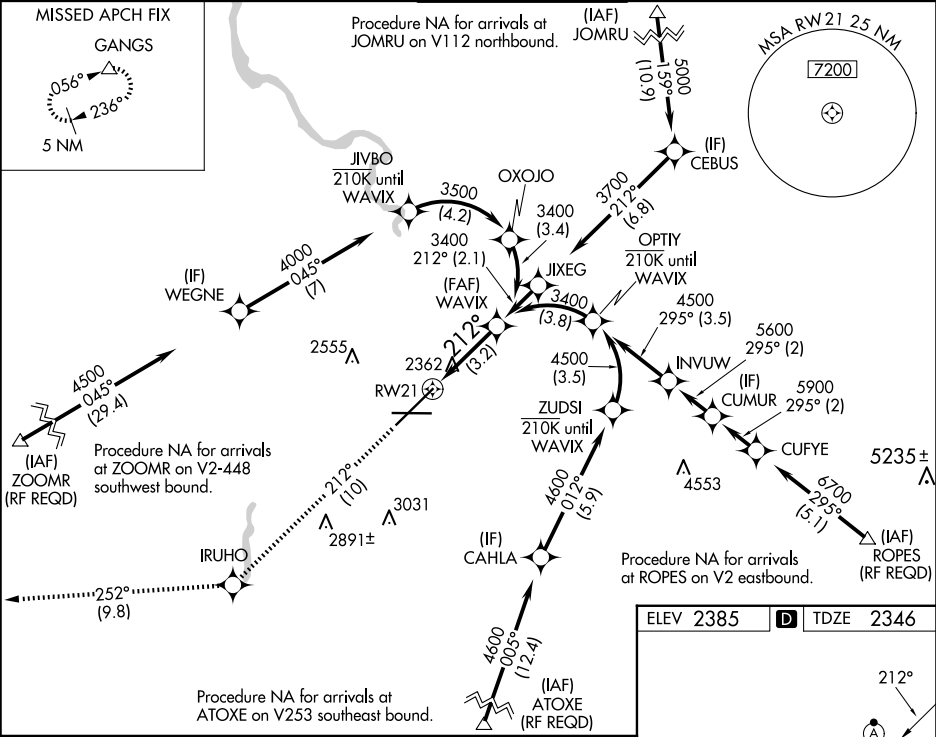
RNP AR APCH.

▼ For uncompensated Baro-VNAV systems, procedure NA below -19°C or above 43°C. For inop ALS increase RNP 0.11 visibility all Cats to ¾, RNP 0.15 visibility all Cats to 1½ and RNP 0.30 visibility all Cats to 1¾.

ALSF-2

MISSED APPROACH: Climb to 5000 on track 212° to IRUHO and on track 252° to GANGS and hold.
*Missed approach requires minimum climb of 310 feet per NM to 3000.

ATIS	SPOKANE APP CON	SPOKANE TOWER	GND CON	CLNC DEL
124.325 254.375	123.75 282.25 (205°-025°) 133.35 263.0 (026°-204°)	118.3 278.3	121.9 348.6	127.55



5000

IRUHO

tr 212°

tr 252°

GANGS

VGSI and RNAV glidepath not coincident (VGSI Angle 3.00/TCH 73).

WAVIX

3400

212°

3400

GP 3.00° TCH 55

3.2 NM

See planview for multiple IF locations.

RW21

CATEGORY	A	B	C	D
RNP 0.11 DA*		2596/24	250 (300-½)	
RNP 0.15 DA		2699/30	353 (400-⅝)	
RNP 0.30 DA		2752/45	406 (400-⅞)	

ELEV 2385

TDZE 2346

212°

0.6% DOWN

0.6% UP

81.99 X 150

26

TWR

TDZ/CL Rws 3 and 21

REIL Rws 8 and 26

HIRL Rwy 3-21

MIRL Rwy 8-26