

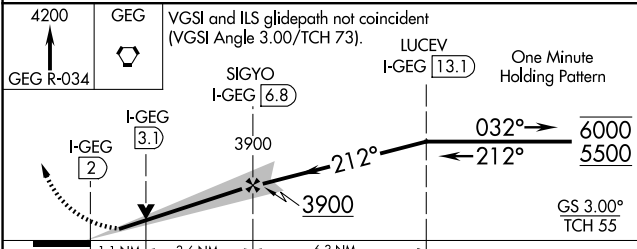
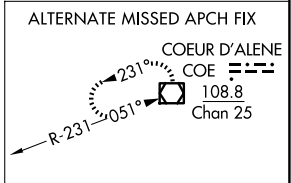
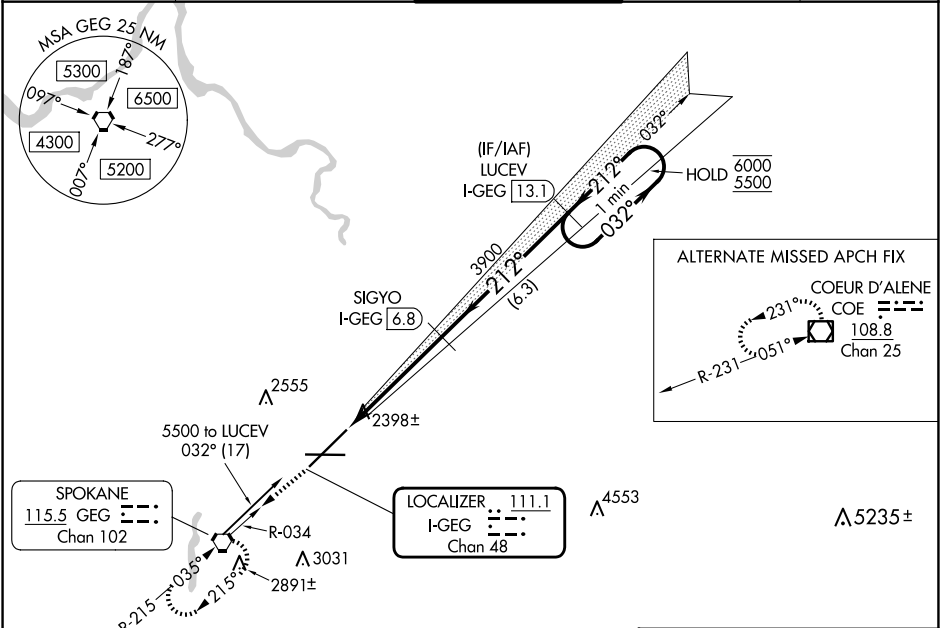
LOC/DME I-GEG	APP CRS	Rwy Ldg	11002
111.1	212°	TDZE	2346
Chan 48		Apt Elev	2385

ILS or LOC RWY 21

SPOKANE INTL (GEG)

DME required.	ALSF-2	MISSED APPROACH: Climb to 4200 on GEG VORTAC R-034 to GEG VORTAC and hold, continue climb-in-hold to 4200.

ATIS	SPOKANE APP CON	SPOKANE TOWER	GND CON	CLNC DEL
124.325 254.375	123.75 282.25 (205°-025°) 133.35 263.0 (026°-204°)	118.3 278.3	121.9 348.6	127.55



CATEGORY	A	B	C	D
S-ILS 21	2546/18 200 (200-½)			
S-LOC 21	2760/24	414 (400-½)	2760/40	414 (400-¾)
CIRCLING	2960-1 575 (600-1)	2980-1 595 (600-1)	3180-2¼ 795 (800-2¼)	3380-3 995 (1000-3)

