
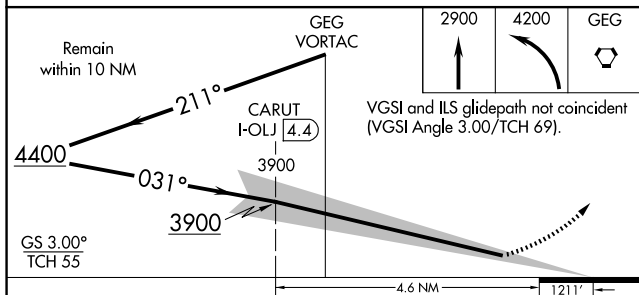
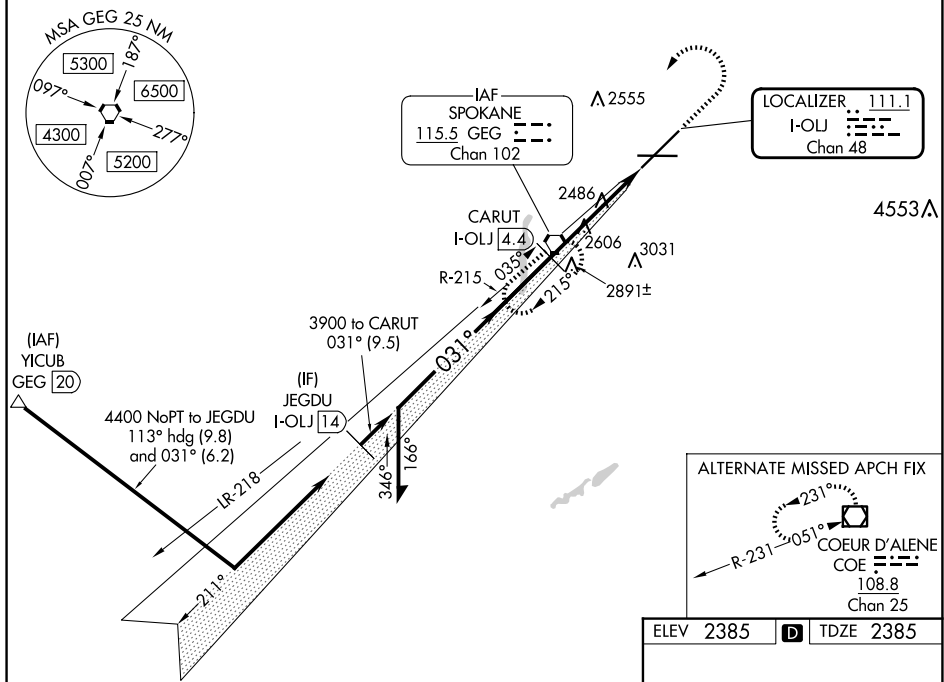


LOC/DME I-OLJ <u>111.1</u> Chan 48	APP CRS 031°	Rwy Ldg 11002 TDZE 2385 Apt Elev 2385
--	------------------------	--

ILS RWY 3 (CAT II & III)
SPOKANE INTL (GEG)

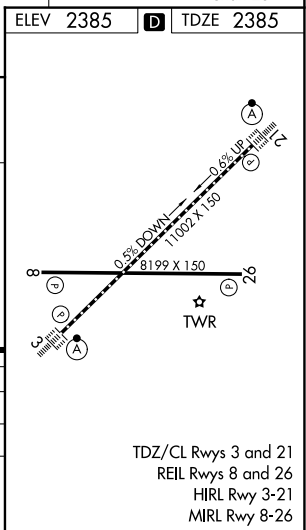
<p>CAT II: RVR 1000 authorized with specific OPSPEC, MSPEC, or LOA approval and use of autoland or HUD to touchdown.</p>	<p>ALSF-2</p> 	<p>MISSED APPROACH: Climb to 2900 then climbing left turn to 4200 direct GEG VORTAC and hold, continue climb-in-hold to 4200.</p>
---	--	--

ATIS 124.325 254.375	SPOKANE APP CON 123.75 282.25 (205°-025°) 133.35 263.0 (026°-204°)	SPOKANE TOWER 118.3 278.3	GND CON 121.9 348.6	CLNC DEL 127.55
--------------------------------	--	-------------------------------------	-------------------------------	---------------------------



CATEGORY	A	B	C	D
S-ILS 3	CAT II	RA 104/12	100	DA 2485
S-ILS 3		CAT III	RVR 03	

CATEGORY II & III ILS - SPECIAL AIRCREW
& AIRCRAFT CERTIFICATION REQUIRED



ILS RWY 3 (CAT II & III)