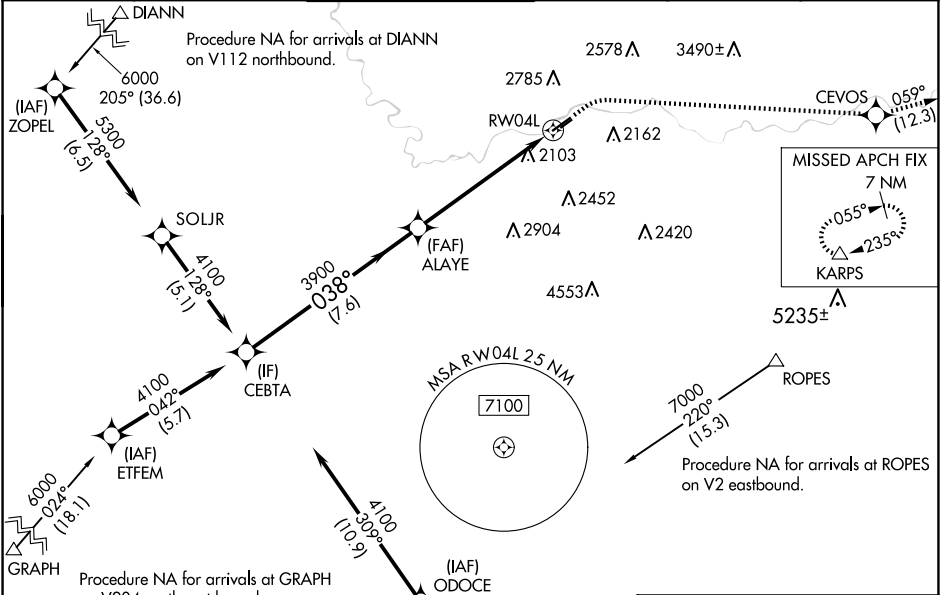


WAAS CH 65931 W04A	APP CRS 038°	Rwy Ldg TDZE 1949 Apt Elev 1957
--	------------------------	---

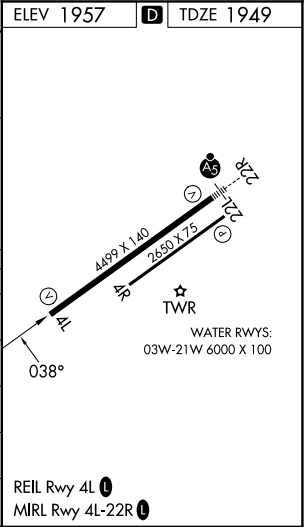
RNAV (GPS) RWY 4L
FELTS FLD (S'F'F')

RNP APCH - GPS.	MISSED APPROACH: Climb to 2850 then climbing right turn to 8000 direct CEVOS and on track 059° to KARPS and hold, continue climb-in-hold to 8000. * LPV missed approach requires minimum climb of 330 feet per NM to 5400.
Procedure NA for arrivals at DIANN on V112 northbound. Circling to Rwy 22L NA at night. Circling NA northwest of Rwy 4L-22R. Rwy 4L helicopter visibility reduction below ¾ SM NA. For uncompensated Baro-VNAV systems, LNAV/VNAV NA below -18°C or above 54°C.	

ATIS 120.55	SPOKANE APP CON 133.35 263.0	FELTS TOWER ★ 132.5 (CTAF) 239.025	GND CON 121.7	CLNC DEL 121.7	UNICOM 122.95
-----------------------	--	--	-------------------------	--------------------------	-------------------------



VGSI and RNAV glidepath not coincident (VGSI Angle 3.00/TCH 50).	2850	8000	CEVOS	tr 059°	KARPS
CEBTA	ALAYE				
4100	3900	2.6 NM to RW04L	RW04L		
GP 3.00° TCH 56					
7.6 NM	3.4 NM	2.6 NM			
CATEGORY	A	B	C	D	
LPV DA*		2203-¾	254 (300-¾)		
LPV DA		2529-1⅝	580 (600-1⅝)		
LNAV/VNAV DA		2779-2½	830 (900-2½)		
LNAV MDA	2820-1 871 (900-1)	2820-1¼ 871 (900-1¼)	2820-2½ 871 (900-2½)		
CIRCLING	2820-1¼	863 (900-1¼)	3100-3 1143 (1200-3)	3360-3 1403 (1500-3)	



NW-1, 07 AUG 2025 to 04 SEP 2025

NW-1, 07 AUG 2025 to 04 SEP 2025