

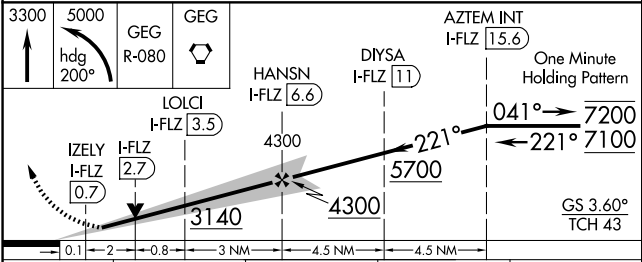
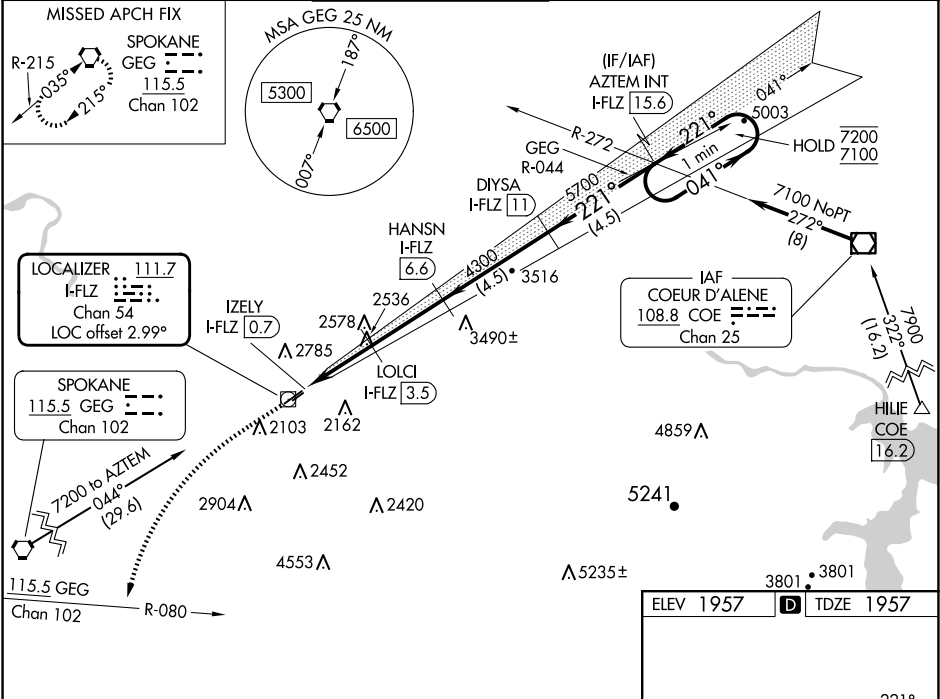
LOC/DME I-FLZ	APP CRS	Rwy Ldg	4499
111.7	221°	TDZE	1957
Chan 54		Apt Elev	1957

ILS or LOC RWY 22R

FELTS FLD (SFF)

DME required.	MALSR	MISSED APPROACH: Climb to 3300 then climbing left turn to 5000 on heading 200° and GEG VORTAC R-080 to GEG VORTAC and hold.
<div><div><div>▼</div><div>▲</div><div>⚡</div></div><div>Circling NA northwest of Rwy 4L-22R. Circling Rwy 22L NA at night. Rwy 22R helicopter visibility reduction below ¾ SM NA. For inop ALS, increase SHLS Cat A/B/C visibility to ¾ SM, increase S-LOC Cat A visibility to 1 SM and Cat C visibility to 2 ½ SM.</div></div>	<div><div>⚡</div><div>AS</div></div>	

ATIS	SPOKANE APP CON	FELTS TOWER ★	GND CON	CLNC DEL	UNICOM
120.55	133.35 263.0	132.5 (CTAF) 239.025	121.7	121.7	122.95



CATEGORY	A	B	C	D
S-ILS 22R	2257-½ 300 (300-½)			NA
S-LOC 22R	2800-¾ 843 (900-¾)		2800-1⅞ 843 (900-1⅞)	NA
CIRCLING	2800-1¼ 843 (900-1¼)		2800-1½ 843 (900-1½)	3100-3 1143 (1200-3)

