

WAAS  
CH **65926**  
**W23A**

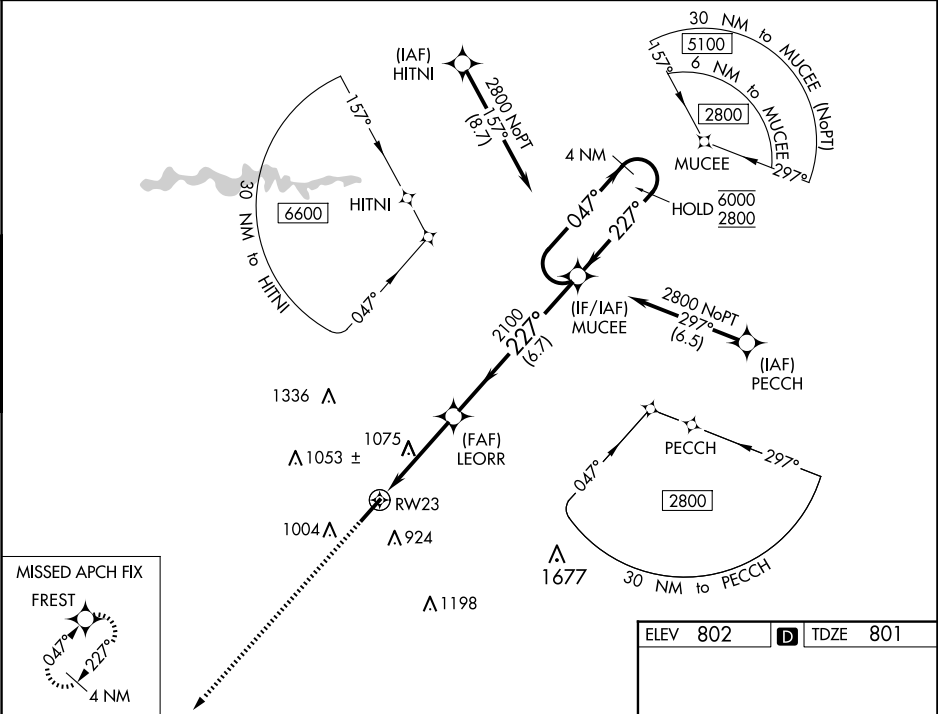
APP CRS  
**227°**

Rwy Idg  
TDZE  
Apt Elev  
**5452**  
**801**  
**802**

**RNAV (GPS) RWY 23**

SPARTANBURG DOWNTOWN MEML/SIMPSON FLD (SPA)

RNP APCH.		MISSED APPROACH: Climb to 2500 direct FREST and hold.	
For uncompensated Baro-VNAV systems, LNAV/VNAV NA below -16°C or above 54°C.			
AWOS-3 <b>133,925</b>	GREER APP CON ★ <b>119.4 350.2</b>	CLNC DEL <b>120.55</b>	UNICOM <b>123.0</b> (CTAF) <b>0</b>



2500 FREST		MUCEE		4 NM Holding Pattern	
*LNAV only.		LEORR		047° → 6000	
RW23		2100		← 227° 2800	
1.6 NM to RW23		2.4 NM		GP 3.00°	
1.6 NM		2.4 NM		TCH 45	
CATEGORY		A		B	
LPV DA		1001-¾		200 (200-¾)	
LNAV/VNAV DA		1090-⅞		289 (300-⅞)	
LNAV MDA		1340-1 539 (600-1)		1340-1½ 539 (600-1½)	
CIRCLING		1340-1 538 (600-1)		1380-1½ 578 (600-1½)	
				1420-2 618 (700-2)	

