
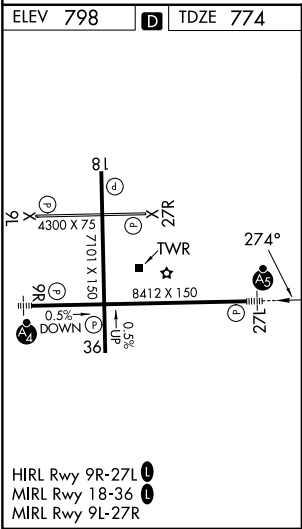
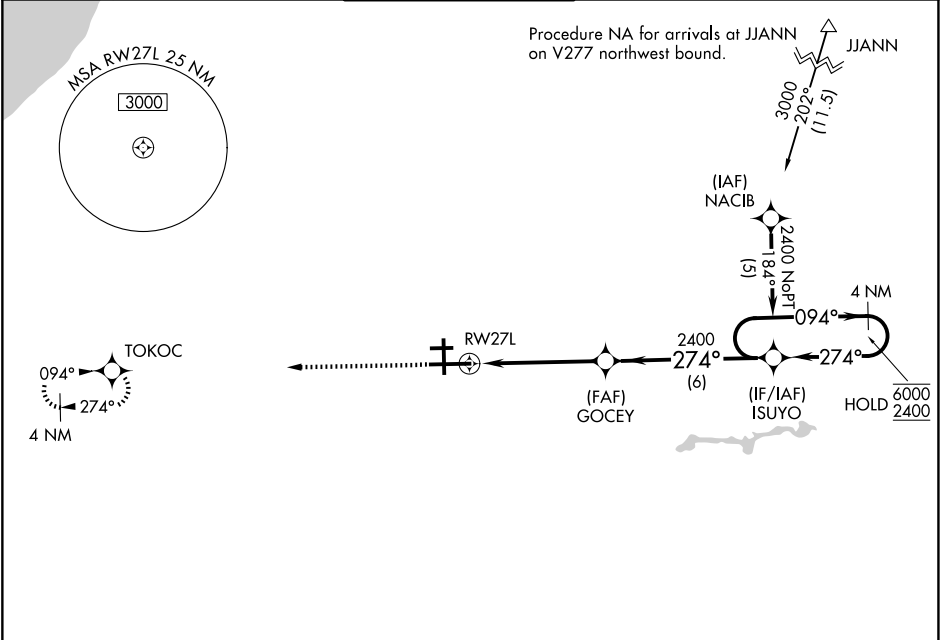


WAAS CH <b>50108</b> <b>W27A</b>	APP CRS <b>274°</b>	Rwy Ldg <b>8412</b> TDZE <b>774</b> Apt Elev <b>798</b>
--	------------------------	---

RNAV (GPS) RWY 27L  
SOUTH BEND INTL (SBN)

RNP APCH - GPS			MALSR		MISSED APPROACH: Climb to 2600 direct TOKOC and hold.
▼ For uncompensated Baro-VNAV systems, LNAV/VNAV NA below -19°C or above 54°C. Circling to Rwy 27R NA at night. For inop ALS, increase LNAV Cat C/D visibility to 1 ½ SM.					
ATIS 120.675	SOUTH BEND APP CON★ 118.55 257.8	SOUTH BEND TOWER ★ 135.675 (CTAF) 0 257.8	GND CON 121.7	CLNC DEL 121.9	



<p>2600 ↑ TOKOC</p> <p>GOCEY 2400</p> <p>ISUYO 4 NM Holding Pattern</p> <p>094° → 6000 ← 274° 2400</p> <p>GP 3.00° TCH 53</p> <p>1.4 NM to RW27L</p> <p>RW27L</p> <p>1.4 NM</p> <p>3.5 NM</p> <p>6 NM</p>				
CATEGORY	A	B	C	D
LPV DA	1030/24		256 (300-½)	
LNAV/VNAV DA	1160/40		386 (400-¾)	
LNAV MDA	1260/24	486 (500-½)	1260/50	486 (500-1)
CIRCLING	1280-1	482 (500-1)	1440-1¾ 642 (700-1¾)	1520-2¼ 722 (800-2¼)