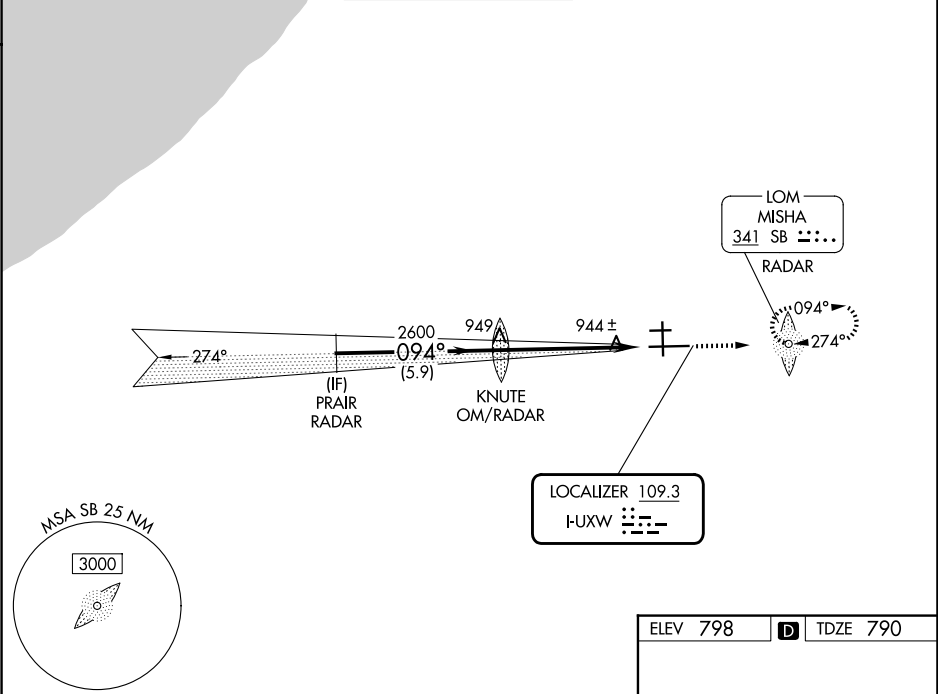


LOC I-UXW 109.3	APP CRS 094°	Rwy Ldg TDZE 790 Apt Elev 798
---------------------------	------------------------	---

ILS or LOC RWY 9R

SOUTH BEND INTL (SBN)

ADF and RADAR required.		MALSF	MISSED APPROACH: Climb to 3000 direct MISHA LOM/RADAR and hold, continue climb-in-hold to 3000.	
<div><div>▼</div> Rwy 9R helicopter visibility reduction below RVR 4000 NA. For inop ALS, increase S-LS 9R visibility all Cats to RVR 5500, increase S-LOC 9R Cats C/D visibility to RVR 6000. Circling Rwy 27R NA at night.</div>		<div><div>⬇</div></div>		
ATIS 120.675	SOUTH BEND APP CON ★ 118.55 257.8	SOUTH BEND TOWER ★ 135.675 (CTAF) 0 257.8	GND CON 121.7	CLNC DEL 121.9



PRAIR RADAR		KNUTE OM/RADAR	3000	SB
2600		2600	↑	↗
GS 3.00°		2600		
TCH 55				
5.9 NM		5.3 NM		
CATEGORY	A	B	C	D
S-ILS 9R	1135/40		345 (400-¾)	
S-LOC 9R	1200/40	410 (500-¾)	1200/50	410 (500-1)
CIRCLING	1280-1	482 (500-1)	1440-1¾ 642 (700-1¾)	1520-2¼ 722 (800-2¼)

