

25219

VOR or TACAN RWY 15
JOE FOSS FLD (FSD)

MISSED APPROACH: Climb to 3500 then right turn direct FSD VORTAC and hold. (TACAN aircraft continue climb to 5000 via FSD R-269 to FRYRE 15 DME and hold west, right turns, 089° inbound)

IAF
SIOUX FALLS
115.0 FSD
Chan 97

147°

192°

123°

192°

FRYRE
FSD 15

089°

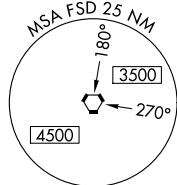
269°

1679±

327°

MSA FSD 25 NM

180°



FAF to MAP 3.7 NM					
Knots	60	90	120	150	180
Min:Sec	3:42	2:28	1:51	1:29	1:14

JOE FOSS FLD (FSD)
VOR or TACAN RWY 15

NC-1, 07 AUG 2025 to 04 SEP 2025