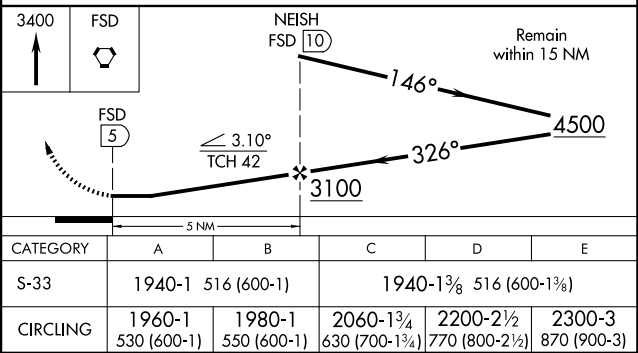
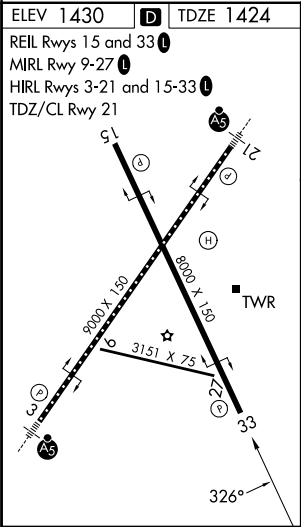
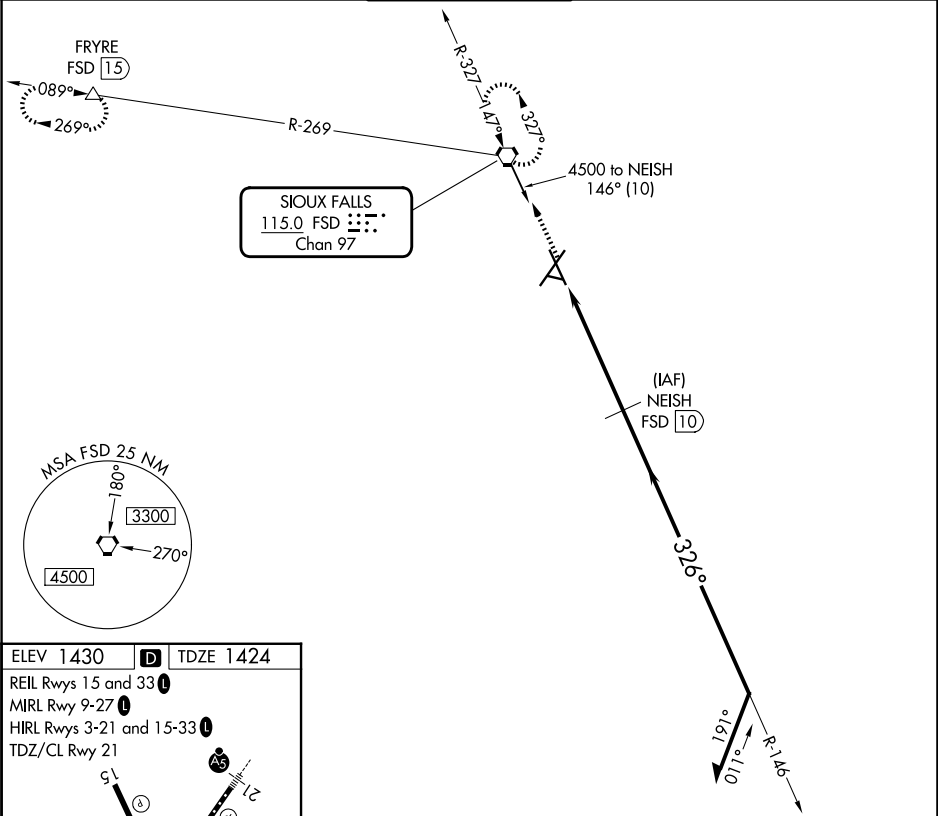


VORTAC FSD	APP CRS	Rwy Ldg	8000
115.0	326°	TDZE	1424
Chan 97		Apt Elev	1430

VOR/DME or TACAN RWY 33

JOE FOSS FLD (FSD)

<div><div><div><div></div><div></div><div></div></div><div><div></div><div></div><div></div></div></div><div><div>ASR</div><div>-30°C</div></div></div> <div>Rwy 33 helicopter visibility reduction below ¾ SM NA.</div>	MISSED APPROACH: Climb to 3400 direct FSD VORTAC and hold. (TACAN aircraft continue climb to 5000 via FSD R-269 to FRYRE 15 DME and hold west, right turns, 089° inbound.)			
ATIS	SIoux FALLS APP CON*	SIoux FALLS TOWER*	GND CON	UNICOM
126.6	125.8 284.725	118.3 (CTAF) 257.8	121.9 348.6	122.95



NC-1, 07 AUG 2025 to 04 SEP 2025

NC-1, 07 AUG 2025 to 04 SEP 2025