

APP CRS
098°

Rwy Ldg
TDZE
1424
Apt Elev
1430

RNAV (GPS) RWY 9
JOE FOSS FLD (FSD)

RNP APCH - GPS.

⚠

ASR

-30°C

Rwy 9 helicopter visibility reduction below ¾ SM NA.

MISSED APPROACH: Climb to 2500 then climbing left turn to 4000 direct MOPUE and hold.

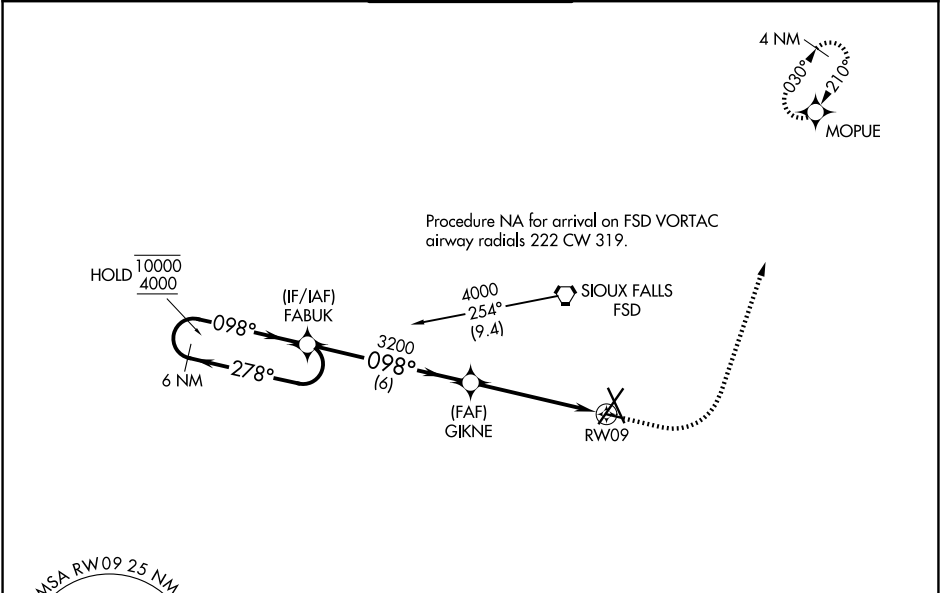
ATIS
126.6

SIoux FALLS APP CON*
125.8 284.725

SIoux FALLS TOWER*
118.3 (CTAF) 0 257.8

GND CON
121.9 348.6

UNICOM
122.95



ELEV 1430

TDZE 1424

6 NM Holding Pattern

FABUK

GIKNE

2500

4000

MOPUE

10000

4000

278°

098°

098°

3200

3.27°

TCH 40

1.5 NM to RW09

RW09

6 NM

3.5 NM

1.5 NM

CATEGORY	A	B	C	D
LNNAV MDA	2000-1	576 (600-1)	NA	NA
CIRCLING	2000-1	570 (600-1)	NA	NA

TDZ/CL Rwy 21

MRL Rwy 9-27

REIL Rws 15 and 33

HIRL Rws 3-21 and 15-33