

SIoux FALLS, SOUTH DAKOTA

AL-396 (FAA)

25219

|  |                        |   |
|--|------------------------|---|
| WAAS<br>CH <b>97722</b><br><b>W03A</b> | APP CRS<br><b>030°</b> | Rwy Ldg <b>8999</b><br>TDZE <b>1424</b><br>Apt Elev <b>1430</b> |
|--|------------------------|---|

RNAV (GPS) RWY 3  
JOE FOSS FLD (FSD)

RNP APCH - GPS.

**T** For uncompensated Baro-VNAV systems, LNAV/VNAV NA below  
**A** -20°C or above 54°C. For inop ALS, increase LNAV/VNAV all Cats  
 ASR visibility to RVR 4500 and LNAV Cats C/D visibility to 1½ SM.  
**❄** -30°C

MALSR



**MISSED APPROACH:** Climb to 4000  
direct MOPUE and hold.

|               |                                       |  |                        |                  |
|---------------|---------------------------------------|--|------------------------|------------------|
| ATIS<br>126.6 | SIoux FALLS APP CON★<br>125.8 284.725 | SIoux FALLS TOWER★<br>118.3 (CTAF) 0 257.8 | GND CON<br>121.9 348.6 | UNICOM<br>122.95 |
|---------------|---------------------------------------|--|------------------------|------------------|

MISSED APCH FIX

4 NM  $\rightarrow$  1000



Procedure NA for arrivals at DOLTS  
on V80-148 southwest bound.

Procedure NA for arrivals at JILRO  
on T400 northeast bound.

KASME 4000 030° 3400 RANOE 2160 VULKN 2.2 NM to RW03 1.4 NM to RW03 RW03

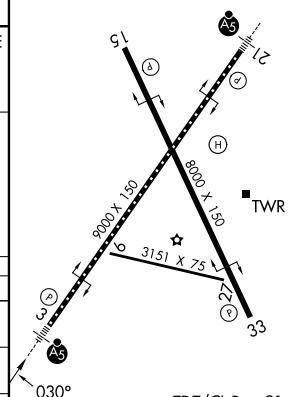
GP 3.00° TCH 54

7 NM 3.8 NM 0.8 NM 1.4 NM

4000 MOPUE

| CATEGORY         | A                   | B | C                       | D                       |
|------------------|---------------------|---|-------------------------|-------------------------|
| LPV DA           | 1674/24 250 (300-½) |   |                         |                         |
| LNAV/<br>VNAV DA | 1741/24 317 (400-½) |   |                         |                         |
| LNAV MDA         | 1920/24 496 (500-½) |   | 1920/50 496 (500-1)     |                         |
| CIRCLING         | 1980-1 550 (600-1)  |   | 2060-1¾<br>630 (700-1¾) | 2200-2½<br>770 (800-2½) |

|           |   |           |
|-----------|---|-----------|
| ELEV 1430 |  | TDZE 1424 |
|-----------|---|-----------|



TDZ/CL Rwy 21  
MIRL Rwy 9-27 **L**  
REIL Rwy 15 and 33 **L**  
HIRL Rwy 3-21 and 15-33 **L**

SIoux FALLS, SOUTH DAKOTA

Amdt 1E 15JUN23

43°35'N-96°45'W

JOE FOSS FLD (FSD)

RNAV (GPS) RWY 3

NC-1, 07 AUG 2025 to 04 SEP 2025