

| | | |
|-------------|----------|-------------|
| APP CRS | Rwy Ldg | 3151 |
| 272° | TDZE | 1424 |
| | Apt Elev | 1430 |

RNAV (GPS) RWY 27
JOE FOSS FLD (FSD)

RNP APCH.

ASR Rwy 27 helicopter visibility reduction below $\frac{3}{4}$ SM NA.
 -30°C

MISSED APPROACH: Climb to 2500, then climbing right turn to 4000 direct MOPUE WP and hold.

ATIS
126.6

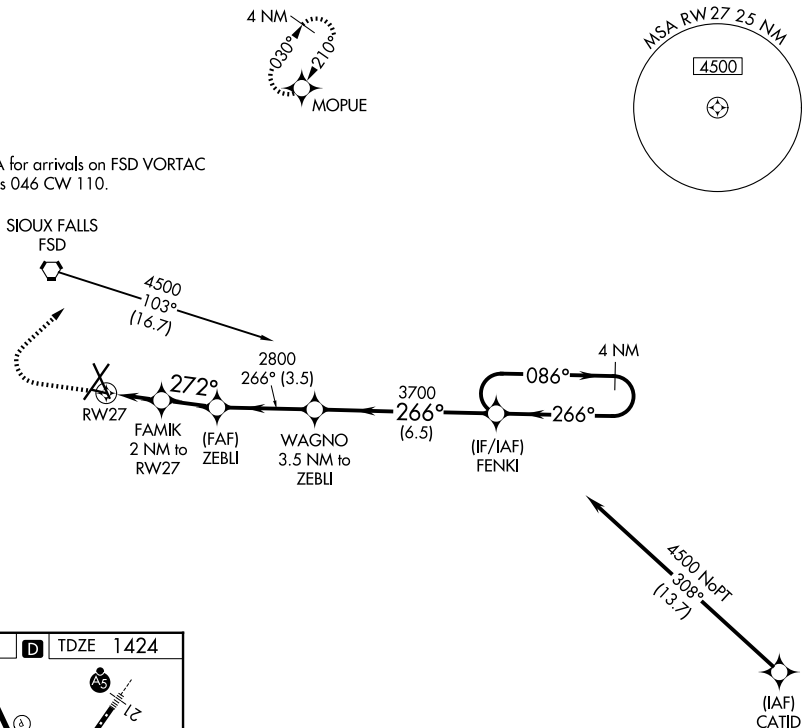
SIOUX FALLS APP CON★
125.8 284.725

SIOUX FALLS TOWER★
 118.3 (CTAF) **L** 257.8

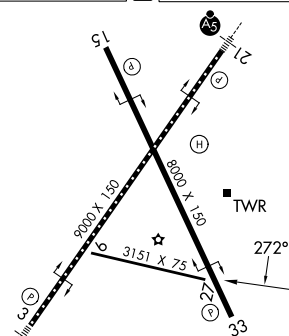
GND CON
121.9 348.6

UNICOM
122.95

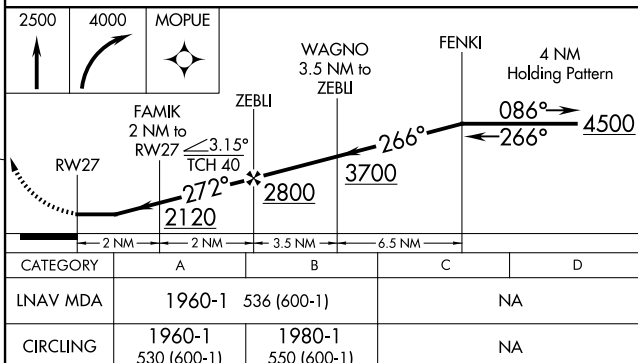
Procedure NA for arrivals on FSD VORTAC
airway radials 046 CW 110.



| | | |
|-----------|---|-----------|
| ELEV 1430 |  | TDZE 1424 |
|-----------|---|-----------|



TDZ/CL Rwy 21
MIRL Rwy 9-27 **L**
REIL Rwys 15 and 33 **L**
HIRL Rwys 3-21 and 15-33 **L**



SIOUX FALLS, SOUTH DAKOTA
Orig-F 18JUN20

43°35'N-96°45'W

JOE FOSS FLD (FSD)
RNAV (GPS) RWY 27