

SIOUX FALLS, SOUTH DAKOTA

HI-ILS Z or LOC Z RWY 3

LOC I-FSD 109.9	APCH CRS 030°	Rwy Idg 8999 TDZE 1424 Arpt Elev 1430
---------------------------	-------------------------	--

[USAF]

JOE FOSS FLD (KFSD)

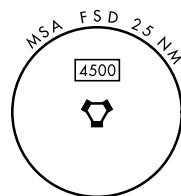
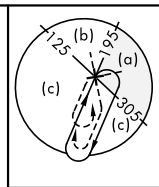
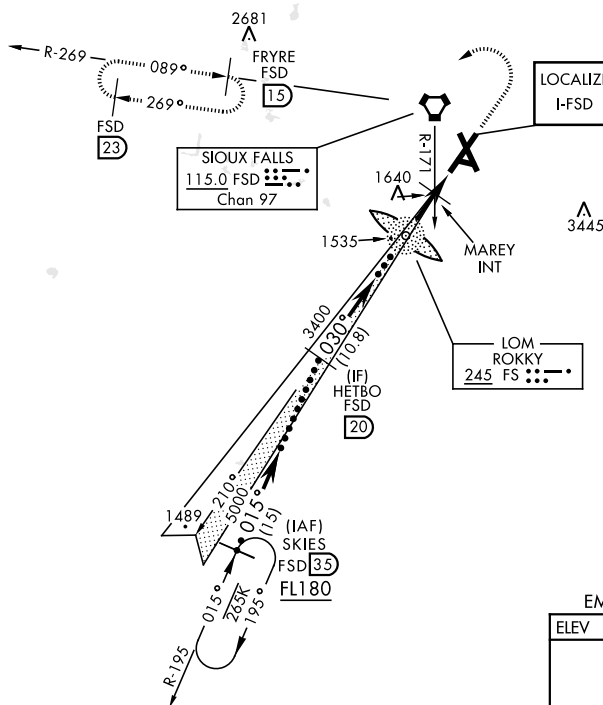
RADAR and DME required.

- * When ALS inop, increase CAT CDE RVR to 40, vis to $\frac{3}{4}$ mile.
 ** When ALS inop, increase CAT CDE vis to 1 $\frac{1}{2}$ miles.
 *** When ALS inop, increase CAT CDE vis to 1 $\frac{1}{2}$ miles.



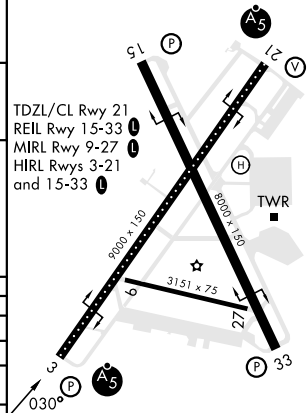
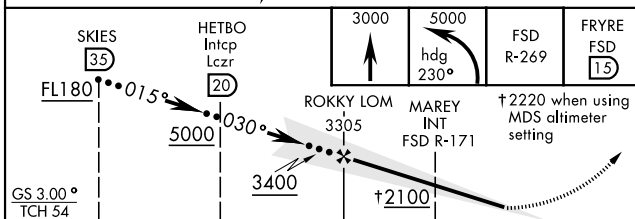
MISSED APPROACH: Climb to 3000, then climbing left turn to 5000 on heading 230° and FSD VORTAC R-269 to FRYRE (FSD 15 DME) and hold.

ATIS 126.6	SIOUX FALLS APP CON 125.8 306.2	SIOUX FALLS TOWER ★ 118.3(CTAF) 257.8	GND CON 121.9 348.6	ASR
----------------------	---	---	-------------------------------	-----



EMERG SAFE ALT 100 NM 4600

ELEV 1430	TDZE 1424
-----------	-----------



CATEGORY	C	D	E
S-ILS 3 *	1674/24	250	(300-1/2)
S-LOC 3 **	2100-1 1/2 676 (700-1 1/2)	2100-1 1/2 676	(700-1 1/2)
CIRCLING	2100-1 1/8 670 (700-1 1/2)	2200-2 1/2 770 (800-2 1/2)	2300-3 870 (900-3)
MAREY FIX MINIMA			
S-LOC 3 ***	1940/55	516	(600-1)
CIRCLING	2060-1 3/4 630 (700-1 3/4)	2200-2 1/2 770 (800-2 1/2)	2300-3 870 (900-3)

SIOUX FALLS, SOUTH DAKOTA

43°35'N-96°45'W

JOE FOSS FLD (KFSD)

Amdt 10 07AUG25

HI-ILS Z or LOC Z RWY 3

NC-1, 07 AUG 2025 to 04 SEP 2025