

LOC I-JOU

111.1

APCH CRS

210°

Rwy Idg

8999

TDZE

1430

Arpt Elev

1430

AL-396 [USAF]

JOE FOSS FLD (KFSD)

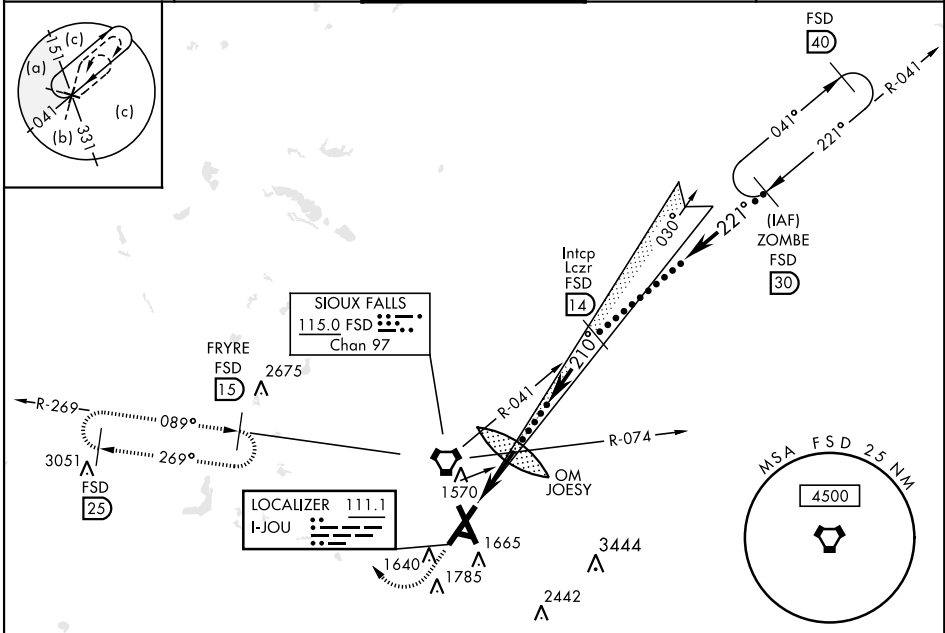
DME required. RADAR required for procedure entry.

MALS R

A5

MISSED APPROACH: Climb to 3400 then climbing right turn to 5000 on heading 300° and FSD R-269 to FRYRE 15 DME and hold.

ATIS 126.6	SIoux FALLS APP CON 125.8 306.2	SIoux FALLS TOWER ★ 118.3(CTAF) 257.8	GND CON 121.9 348.6	ASR
---------------	------------------------------------	--	------------------------	-----



EMERG SAFE ALT 100 NM 4600

3400

5000

FSD R-269

hdg 300°

FRYRE FSD 15

OM JOESY

3025

Intcp Lczt 14

210°

221°

ZOMBE 30

FL180

6000

GS 3.00°

TCH 49°

3100

4.9 NM

10.1 NM

CATEGORY	C	D	E
S-ILS 21*	1630/18	200	(200-½)
S-LOC 21**	1920/50	490 (500-1)	1920/60 490 (500-1½)
CIRCLING	2060-1¾ 630 (700-1¾)	2200-2½ 770 (800-2½)	2300-3 870 (900-3)

TDZL/CL Rwy 21

REIL Rwy 15-33

MIRL Rwy 9-27

HIRL Rwy 3-21 and 15-33

TWR 151.9

8000 x 150

3151 x 75

27

33

1470

FAF to MAP 4.9 NM

Knots	120	140	160	180	200
Min:Sec	2:27	2:06	1:50	1:38	1:28