

WAAS CH 90211	APP CRS 313°	Rwy Idg TDZE 1096	9002
W31A		Apt Elev 1098	

RNAV (GPS) RWY 31

SIoux GATEWAY/BRIG GENERAL BUD DAY FLD (SUx)

RNP APCH-GPS.

▽

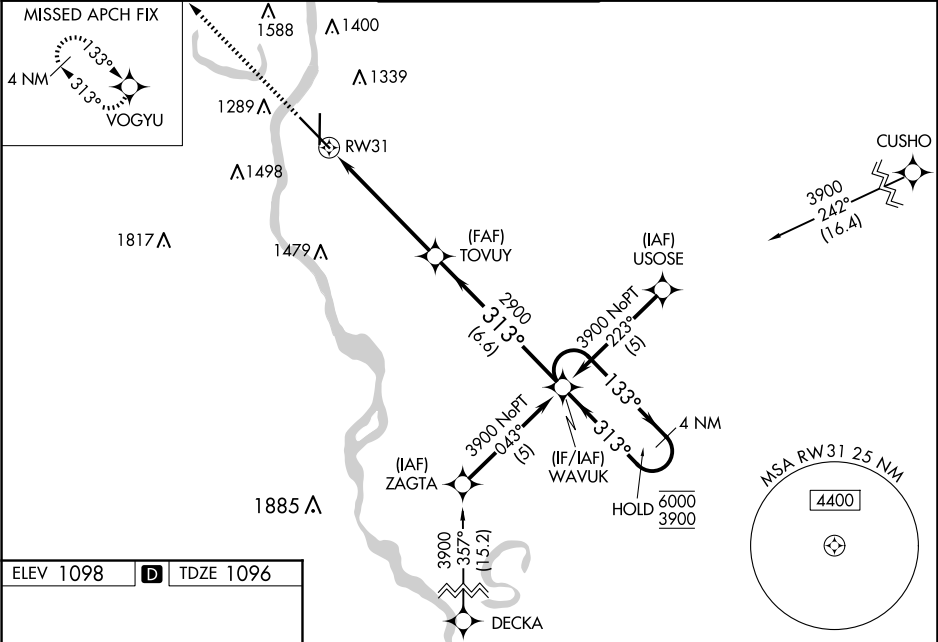
⚠

For uncompensated Baro-VNAV systems, LNAV/VNAV NA below -21°C or above 54°C. For inop ALS increase LPV Cat E visibility to RVR 4000; increase LNAV/VNAV all Cats visibility to 1½ SM and LNAV Cats C/D/E visibility to 1¾ SM.
** RVR 1800 authorized with use of FD or AP or HUD to DA.

MALSR

MISSED APPROACH: Climb to 3500 direct VOGYU and hold.

ATIS 119.45 270.8	SIoux CITY APP CON ★ 124.6 307.0	SIoux CITY TOWER ★ 118.7(CTAF) 0 254.3	GND CON 121.9 348.6	UNICOM 122.95
-----------------------------	--	--	-------------------------------	-------------------------



ELEV 1098 **D** TDZE 1096

REIL Rwy 18 **1**
HIRL Rwy 13-31 **1**
MIRL Rwy 18-36 **1**

3500	VOGYU	VGSi and RNAV glidepath not coincident (VGSi Angle 3.00/TCH 51).			
*LNAV only.	*1.3 NM to RW31	WAWUK	4 NM Holding Pattern		
RW31		TOVUY	2900	133°→ 6000	← 313° 3900
1.3 NM		4.2 NM	6.6 NM	GP 3.00° TCH 43	
CATEGORY	A	B	C	D	E
LPV DA**	1296/24 200 (200-½)				
LNAV/VNAV DA	1596/50 500 (500-1)				
LNAV MDA	1560/24	464 (500-½)	1560/50 464 (500-1)		
CIRCLING	1640-1 542 (600-1)	1700-1 602 (700-1)	1700-1¾ 602 (700-1¾)	1860-2½ 762 (800-2½)	2000-3 902 (1000-3)

NC-3, 07 AUG 2025 to 04 SEP 2025

NC-3, 07 AUG 2025 to 04 SEP 2025