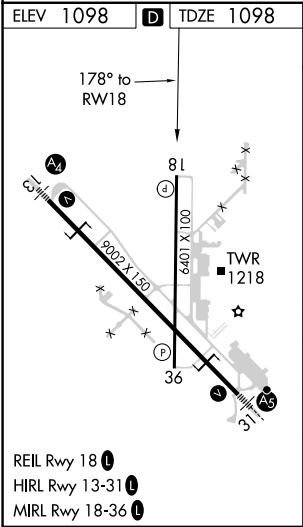
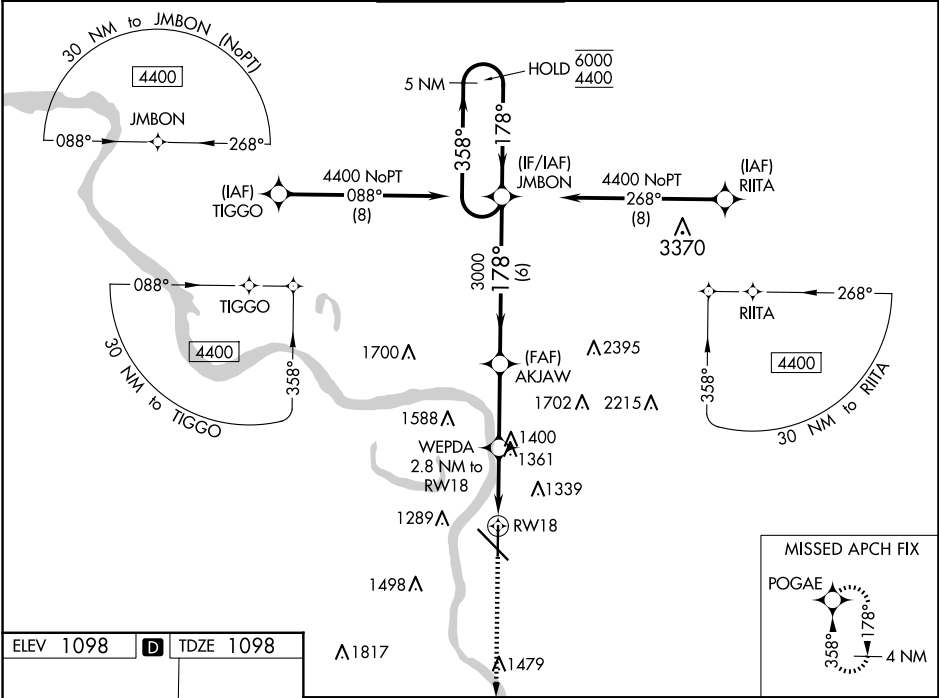


WAAS CH <b>77838</b> <b>W18A</b>	APP CRS <b>178°</b>	Rwy Idg TDZE <b>1098</b> Apt Elev <b>1098</b>
--	------------------------	---

RNAV (GPS) RWY 18

SIoux GATEWAY/BRIG GENERAL BUD DAY FLD (SUx)

RNP APCH. ▼ For uncompensated Baro-VNAV systems, LNAV/VNAV ▲ NA below -20°C or above 54°C.		MISSED APPROACH: Climb to 3200 direct POGAE and hold.	
ATIS <b>119.45 270.8</b>	SIoux CITY APP CON * <b>124.6 307.0</b>	SIoux CITY TOWER * <b>118.7 (CTAF) 0 254.3</b>	GND CON <b>121.9 348.6</b>
		UNICOM <b>122.95</b>	



ELEV 1098 D TDZE 1098		3200 POGAE	
178° to RW18		*LNAV only	
81		*1.6 NM to RW18	
8002 X 130		WEPDA 2.8 NM to RW18	
6400 X 100		AKJAW	
6400 X 100		JMBON 5 NM Holding Pattern	
36		3000	
311		358° 6000	
311		178° 4400	
311		GP 3.00°	
311		TCH 54	
311		CATEGORY A B C D	
311		LPV DA 1352-3/4 254 (300-3/4)	
311		LNAV/VNAV DA 1430-1 332 (400-1)	
311		LNAV MDA 1680-1 582 (600-1) 1680-13/4 582 (600-13/4)	
311		CIRCLING 1680-1 582 (600-1) 1700-1 602 (700-1) 1700-13/4 602 (700-13/4) 1860-21/2 762 (800-21/2)	