

LOC/DME I-SUX	APP CRS	Rwy Idg	9002
109.3	313°	TDZE	1096
Chan 30		Apt Elev	1098

ADF required. DME required for LOC only. RADAR required for procedure entry.


⚠ Autopilot coupled approach NA below 2025 MSL. For inop ALS, increase S-ILS 31 Cat E visibility to RVR 4000 and S-LOC 31 Cat E to 1½ SM.

⚠ *RVR 1800 authorized with use of FD or AP or HUD to DA.

ILS or LOC RWY 31

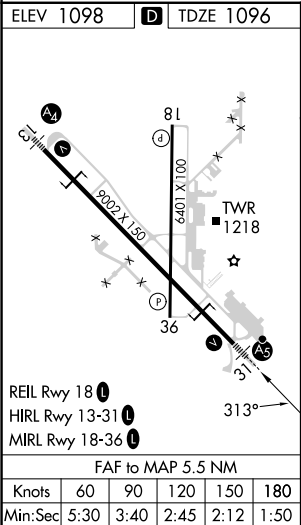
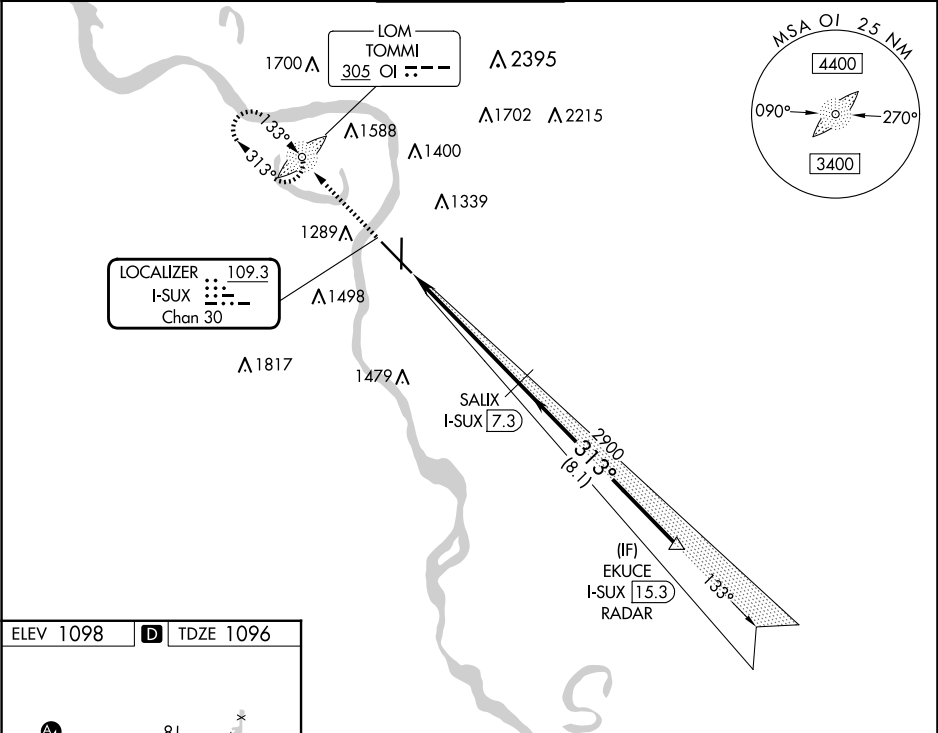
SIoux GATEWAY/BRIG GENERAL BUD DAY FLD (SUX)

MALSR



MISSED APPROACH: Climb to 3100 direct TOMMI LOM and hold, continue climb-in-hold to 3100.

ATIS	SIoux CITY APP CON *	SIoux CITY TOWER *	GND CON	UNICOM
119.45 270.8	124.6 307.0	118.7 (CTAF) 0 254.3	121.9 348.6	122.95



3100	OI	VGSI and ILS glidepath not coincident (VGSI Angle 3.00/TCH 51).			
		SALIX I-SUX 7.3	EKUCE I-SUX 15.3	RADAR	
		2900	313°	2900	
		1.2 NM	4.3 NM	8.1 NM	
CATEGORY	A	B	C	D	E
S-ILS 31*	1296/24 200 (200-½)				
S-LOC 31	1540/24	444 (500-½)	1540/45	444 (500-¾)	
CIRCLING	1640-1 542 (600-1)	1700-1 602 (700-1)	1700-1¾ 602 (700-1¾)	1860-2½ 762 (800-2½)	1940-3 842 (900-3)