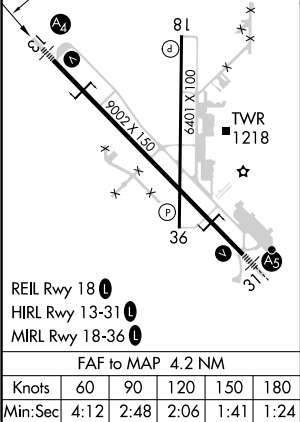
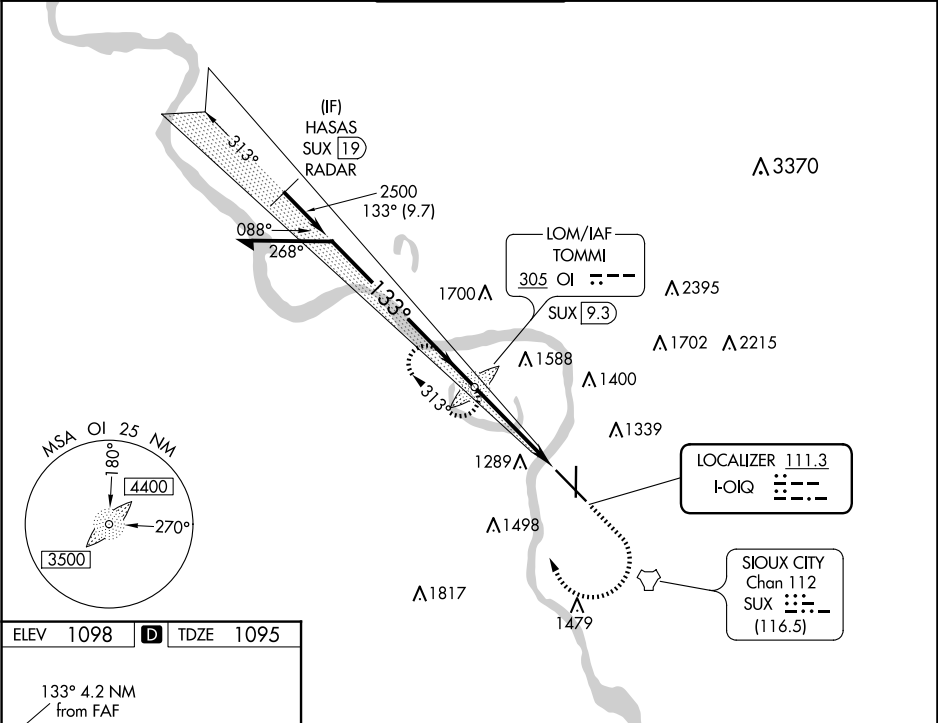


LOC I- OIQ 111.3	APP CRS 133°	Rwy Idg TDZE Apt Elev	9002 1095 1098
-----------------------------------	------------------------	-----------------------------	---

ILS or LOC RWY 13

SIOUX GATEWAY/BRIG GENERAL BUD DAY FLD (SUX)

ADF required. ADF or RADAR required for procedure entry.		MALS	MISSED APPROACH: Climb to 2000 then climbing right turn to 3100 direct TOMMI LOM/SUX 9.3 DME and hold, continue climb-in-hold to 3100	
For inop ALS, increase S-LOC 13 Cat E visibility to 1½ SM. Inop table does not apply to S-ILS 13.				
ATIS 119.45 270.8	SIOUX CITY APP CON ★ 124.6 307.0	SIOUX CITY TOWER ★ 118.7 (CTAF) 0 254.3	GND CON 121.9 348.6	UNICOM 122.95



VGSI and ILS glidepath not coincident (VGSI Angle 3.00/TCH 50).					OI LOM TOMMI SUX 9.3
Remain within 15 NM					2000 3100 OI
GS 3.00° TCH 54					*SUX 6.4 SUX 5.1 *LOC only
2.9 NM 1.3 NM					
CATEGORY	A	B	C	D	E
S-ILS 13	1295/40 200 (200-¾)				
S-LOC 13	1560/40	465 (500-¾)	1560/60 465 (500-1¼)		
CIRCLING	1640-1 542 (600-1)	1700-1 602 (700-1)	1700-1¾ 602 (700-1¾)	1860-2½ 762 (800-2½)	1940-3 842 (900-3)