

VOR/DME Y RWY 33

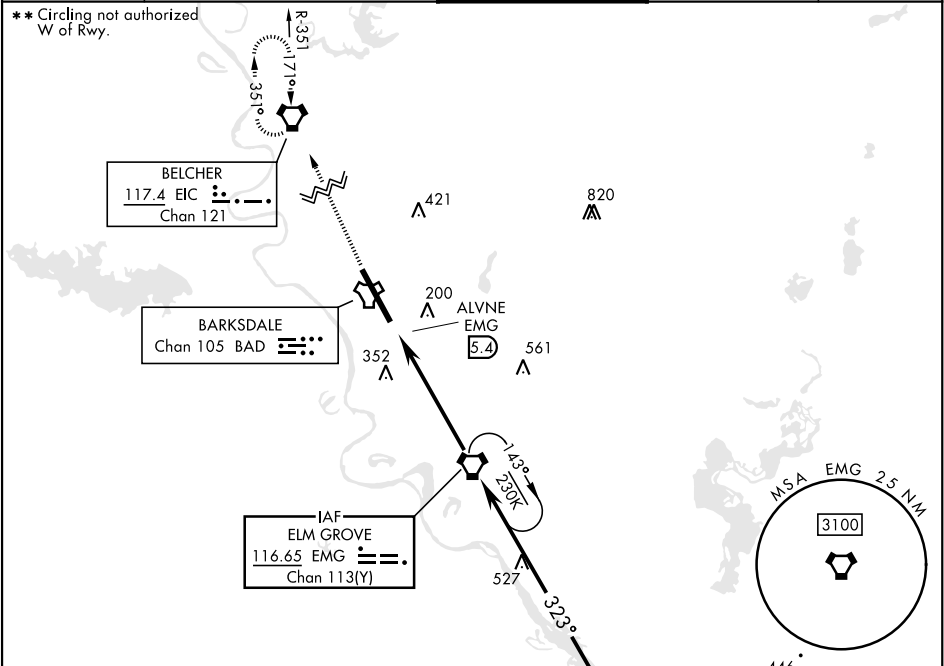
VORTAC EMG <b>116.65</b> Chan <b>113(Y)</b>	APCH CRS <b>323°</b>	Rwy Idg <b>11,758</b> THRE <b>161</b> Arpt Elev <b>165</b>
---	-------------------------	--

[USAF]

BARKSDALE AFB (KBAD)

DME or RADAR required.	ALSIF-1 	MISSED APPROACH: Climb to 3100 direct EIC VORTAC and hold.
* When ALS inop, increase CAT AB RVR to 55 and vis to 1 mile, CAT CDE vis to 1 1/2 miles.		

ATIS <b>307.025</b>	SHREVEPORT APP CON <b>123.75 360.725</b> (320°-152°) <b>119.9 335.55</b> (153°-319°)	TOWER ★ <b>128.25 278.3</b>	GND CON <b>121.8 253.5</b>	ASR
------------------------	--	--------------------------------	-------------------------------	-----



EMERG SAFE ALT 100 NM 3300

ELEV <b>165</b>	THRE <b>161</b>					
HIRL Rwy 15-33		EMG VORTAC RADAR				
FAF to MAP 5.4 NM		3000				
		143°				
		323°				
		1900				
		2.65° TCH 50				
		0.6 NM				
		5.4 NM				
		Remain within 1.5 NM				
		143°				
		323°				
		1900				
		2.65° TCH 50				
		0.6 NM				
		5.4 NM				
		Remain within 1.5 NM				
		143°				
		323°				
		1900				
		2.65° TCH 50				
		0.6 NM				
		5.4 NM				
		Remain within 1.5 NM				
		143°				
		323°				
		1900				
		2.65° TCH 50				
		0.6 NM				
		5.4 NM				
		Remain within 1.5 NM				
		143°				
		323°				
		1900				
		2.65° TCH 50				
		0.6 NM				
		5.4 NM				
		Remain within 1.5 NM				
		143°				
		323°				
		1900				
		2.65° TCH 50				
		0.6 NM				
		5.4 NM				
		Remain within 1.5 NM				
		143°				
		323°				
		1900				
		2.65° TCH 50				
		0.6 NM				
		5.4 NM				
		Remain within 1.5 NM				
		143°				
		323°				
		1900				
		2.65° TCH 50				
		0.6 NM				
		5.4 NM				
		Remain within 1.5 NM				
		143°				
		323°				
		1900				
		2.65° TCH 50				
		0.6 NM				
		5.4 NM				
		Remain within 1.5 NM				
		143°				
		323°				
		1900				
		2.65° TCH 50				
		0.6 NM				
		5.4 NM				
		Remain within 1.5 NM				
		143°				
		323°				
		1900				
		2.65° TCH 50				
		0.6 NM				
		5.4 NM				
		Remain within 1.5 NM				
		143°				
		323°				
		1900				
		2.65° TCH 50				
		0.6 NM				
		5.4 NM				
		Remain within 1.5 NM				
		143°				
		323°				
		1900				
		2.65° TCH 50				
		0.6 NM				
		5.4 NM				
		Remain within 1.5 NM				
		143°				
		323°				
		1900				
		2.65° TCH 50				
		0.6 NM				
		5.4 NM				
		Remain within 1.5 NM				
		143°				
		323°				
		1900				
		2.65° TCH 50				
		0.6 NM				
		5.4 NM				
		Remain within 1.5 NM				
		143°				
		323°				
		1900				
		2.65° TCH 50				
		0.6 NM				
		5.4 NM				
		Remain within 1.5 NM				
		143°				
		323°				
		1900				
		2.65° TCH 50				
		0.6 NM				
		5.4 NM				
		Remain within 1.5 NM				
		143°				
		323°				
		1900				
		2.65° TCH 50				
		0.6 NM				
		5.4 NM				
		Remain within 1.5 NM				
		143°				
		323°				
		1900				
		2.65° TCH 50				
		0.6 NM				
		5.4 NM				
		Remain within 1.5 NM				
		143°				
		323°				
		1900				
		2.65° TCH 50				
		0.6 NM				
		5.4 NM				
		Remain within 1.5 NM				
		143°				
		323°				
		1900				
		2.65° TCH 50				
		0.6 NM				
		5.4 NM				
		Remain within 1.5 NM				
		143°				
		323°				
		1900				
		2.65° TCH 50				
		0.6 NM				
		5.4 NM				
		Remain within 1.5 NM				
		143°				
		323°				
		1900				
		2.65° TCH 50				
		0.6 NM				
		5.4 NM				
		Remain within 1.5 NM				
		143°				
		323°				
		1900				
		2.65° TCH 50				
		0.6 NM				
		5.4 NM				
		Remain within 1.5 NM				
		143°				
		323°				
		1900				
		2.65° TCH 50				
		0.6 NM				
		5.4 NM				
		Remain within 1.5 NM				
		143°				
		323°				
		1900				
		2.65° TCH 50				
		0.6 NM				
		5.4 NM				
		Remain within 1.5 NM				
		143°				
		323°				
		1900				
		2.65° TCH 50				
		0.6 NM				
		5.4 NM				
		Remain within 1.5 NM				
		143°				
		323°				
		1900				
		2.65° TCH 50				
		0.6 NM				
		5.4 NM				
		Remain within 1.5 NM				
		143°				
		323°				
		1900				
		2.65° TCH 50				
		0.6 NM				
		5.4 NM				
		Remain within 1.5 NM				
		143°				
		323°				
		1900				
		2.65° TCH 50				
		0.6 NM				
		5.4 NM				
		Remain within 1.5 NM				
		143°				
		323°				
		1900				
		2.65° TCH 50				
		0.6 NM				
		5.4 NM				
		Remain within 1.5 NM				
		143°				
		323°				
		1900				
		2.65° TCH 50				
		0.6 NM				
		5.4 NM				
		Remain within 1.5 NM				
		143°				
		323°				
		1900				
		2.65° TCH 50				
		0.6 NM				
		5.4 NM				
		Remain within 1.5 NM				
		143°				
		323°				
		1900				
		2.65° TCH 50				
		0.6 NM				
		5.4 NM				
		Remain within 1.5 NM				
		143°				
		323°				
		1900				
		2.65° TCH 50				
		0.6 NM				
		5.4 NM				
		Remain within 1.5 NM				
		143°				
		323°				
		1900				
		2.65° TCH 50				
		0.6 NM				
		5.4 NM				
		Remain within 1.5 NM				
		143°				
		323°				
		1900				
		2.65° TCH 50				
		0.6 NM				
		5.4 NM				
		Remain within 1.5 NM				
		143°				
		323°				
		1900				
		2.65° TCH 50				
		0.6 NM				
		5.4 NM				
		Remain within 1.5 NM				
		143°				
		323°				
		1900				
		2.65° TCH 50				
		0.6 NM				
		5.4 NM				
		Remain within 1.5 NM				
		143°				
		323°				
		1900				
		2.65° TCH 50				
		0.6 NM				
		5.4 NM				
		Remain within 1.5 NM				
		143°				
		323°				
		1900				
		2.65° TCH 50				
		0.6 NM				
		5.4 NM				
		Remain within 1.5 NM				
		143°				
		323°				
		1900				
		2.65° TCH 50				
		0.6 NM				
		5.4 NM				
		Remain within 1.5 NM				
		143°				
		323°				
		1900				
		2.65° TCH 50				
		0.6 NM				
		5.4 NM				
		Remain within 1.5 NM				
		143°				
		323°				
		1900				
		2.65° TCH 50				
		0.6 NM				
		5.4 NM				
		Remain within 1.5 NM				
		143°				
		323°				
		1900				
		2.65° TCH 50				
		0.6 NM				
		5.4 NM				
		Remain within 1.5 NM				
		143°				
		323°				
		1900				
		2.65° TCH 50				
		0.6 NM				
		5.4 NM				
		Remain within 1.5 NM				
		143°				
		323°				
		1900				
		2.65° TCH 50				
		0.6 NM				
		5.4 NM				
		Remain within 1.5 NM				
		143°				
		323°				
		1900				
		2.65° TCH 50				
		0.6 NM				
		5.4 NM				
		Remain within 1.5 NM				
		143°				
		323°				
		1900				
		2.65° TCH 50				
		0.6 NM				
		5.4 NM				
		Remain within 1.5 NM				
		143°				
		323°				
		1900				
		2.65° TCH 50				
		0.6 NM				
		5.4 NM				
		Remain within 1.5 NM				
		143°				
		323°				
		1900				
		2.65° TCH 50				
		0.6 NM				
		5.4 NM				
		Remain within 1.5 NM				
		143°				
		323°				
		1900				
		2.65° TCH 50				
		0.6 NM				
		5.4 NM				
		Remain within 1.5 NM				
		143°				
		323°				
		1900				
		2.65° TCH 50				
		0.6 NM				
		5.4 NM				
		Remain within 1.5 NM				
		143°				
		323°				
		1900				
		2.65° TCH 50				
		0.6 NM				
		5.4 NM				
		Remain within 1.5 NM				
		143°				
		323°				
		1900				
		2.65° TCH 50				
		0.6 NM				
		5.4 NM				
		Remain within 1.5 NM				
		143°				
		323°				
		1900				
		2.65° TCH 50				
		0.6 NM				
		5.4 NM				
		Remain within 1.5 NM				
		143°				
		323°				
		1900				
		2.65° TCH 50				
		0.6 NM				
		5.4 NM				
		Remain within 1.5 NM				
		143°				
		323°				
		1900				
		2.65° TCH 50				
		0.6 NM				
		5.4 NM				
		Remain within 1.5 NM				
		143°				
		323°				
		1900				
		2.65° TCH 50				
		0.6 NM				
		5.4 NM				
		Remain within 1.5 NM				
		143°				
		323°				
		1900				
		2.65° TCH 50				
		0.6 NM				
		5.4 NM				
		Remain within 1.5 NM				
		143°				
		323°				
		1900				
		2.65° TCH 50				
		0.6 NM				
		5.4 NM				
		Remain within 1.5 NM				
		143°				
		323°				
		1900				
		2.65° TCH 50				
		0.6 NM				
		5.4 NM				
		Remain within 1.5 NM				
		143°				
		323°				
		1900				
		2.65° TCH 50				
		0.6 NM				
		5.4 NM				
		Remain within 1.5 NM				
		143°				
		323°				
		1900				
		2.65° TCH 50				
		0.6 NM				
		5.4 NM				
		Remain within 1.5 NM				
		143°				
		323°				
		1900				
		2.65° TCH 50				