



BOSSIER CITY, LOUISIANA

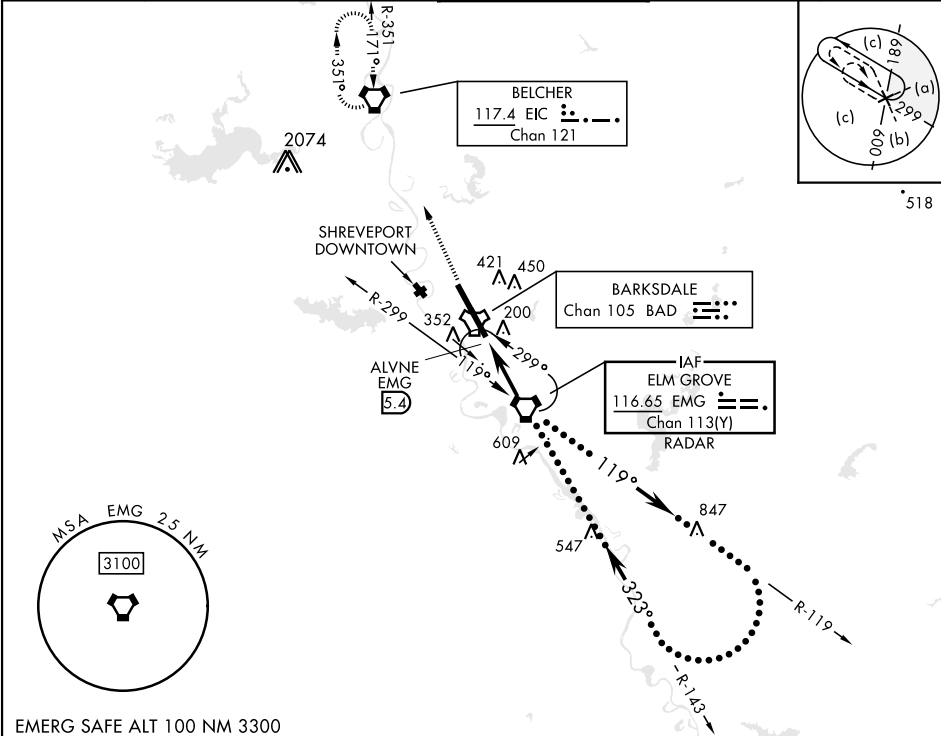
HI-VOR/DME Z RWY 33

25107

VORTAC EMG 116.65 Chan 113(Y)	APCH CRS 323°	Rwy Idg 11,758 THRE 161 Arpt Elev 165	[USAF]	BARKSDALE AFB (KBAD)
---	-------------------------	--	--------	----------------------

DME or RADAR required.	ALSF-1 	MISSED APPROACH: Climb to 3100 direct to EIC VORTAC and hold.
* When ALS inop, increase CAT CDE vis to 1 3/8 miles. ** Circling not authorized W of Rwy.		

ATIS 307.025	SHREVEPORT APP CON 320°-152° 123.75 360.725 153°-319° 119.9 335.55	TOWER ★ 128.25 278.3	GND CON 121.8 253.5	ASR
------------------------	--	--------------------------------	-------------------------------	-----



3100	EIC	EMG VORTAC RADAR	ELEV 165	THRE 161
CATEGORY	C	D	E	HIRL Rwy 15-33
S-33*	640/50	479	(500-1)	FAF to MAP 5.4 NM
CIRCLING**	NOT AUTHORIZED	760-2 595 (600-2)	780-2 1/4 615 (700-2 1/4)	Knots 120 140 160 180 200 Min:Sec 2:42 2:19 2:01 1:48 1:37

BOSSIER CITY, LOUISIANA

32°30'N-93°40'W

BARKSDALE AFB (KBAD)

Amtd 5 25JUN15

HI-VOR/DME Z RWY 33



SC-4, 07 AUG 2025 to 04 SEP 2025

SC-4, 07 AUG 2025 to 04 SEP 2025