
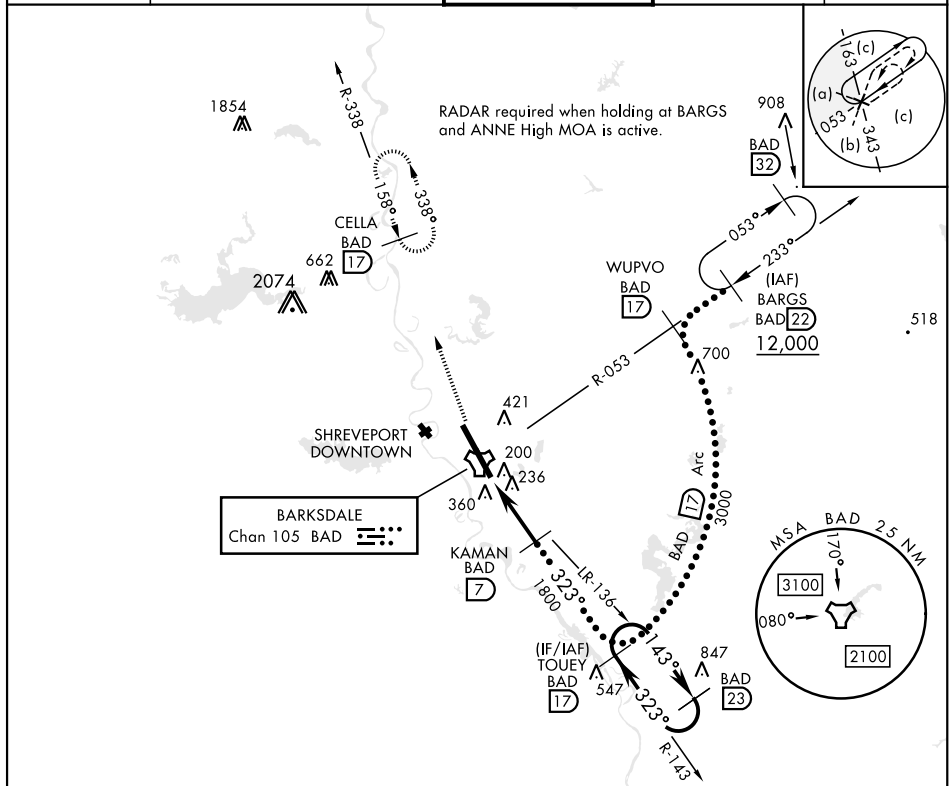


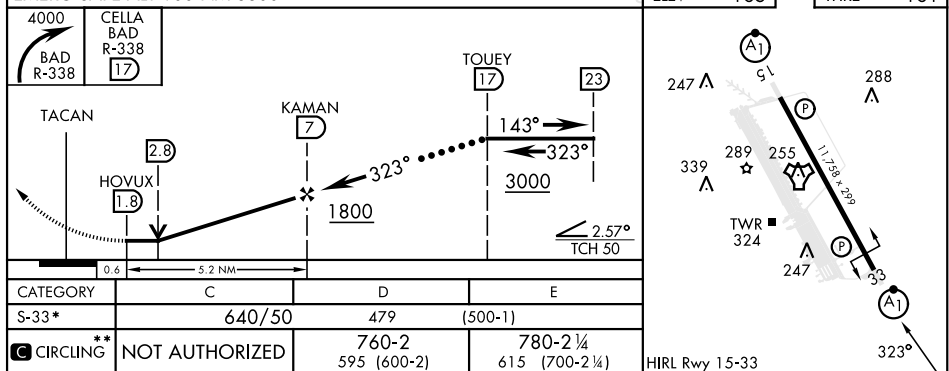
BOSSIER CITY, LOUISIANA

HI-TACAN Z RWY 33

TACAN BAD Chan <b>105</b>	APCH CRS <b>323°</b>	Rwy Idg <b>11,758</b> THRE <b>161</b> Arpt Elev <b>165</b>	[USAF]	BARKSDALE AFB (KBAD)	
* When ALS inop, increase CAT CDE vis to 1½ miles. ** Circling not authorized W of Rwy.			ALSF-1 	MISSED APPROACH: Climb to 4000 via BAD R-338 direct CELLA and hold.	
ATIS <b>307.025</b>	SHREVEPORT APP CON 320°-152° <b>123.75 360.725</b> 153°-319° <b>119.9 335.55</b>		TOWER ★ <b>128.25 278.3</b>		GND CON <b>121.8 253.5</b>
			ASR		



EMERG SAFE ALT 100 NM 3300



BOSSIER CITY, LOUISIANA

32°30'N-93°40'W

BARKSDALE AFB (KBAD)

Amdt 7 25JUN15

HI-TACAN Z RWY 33