
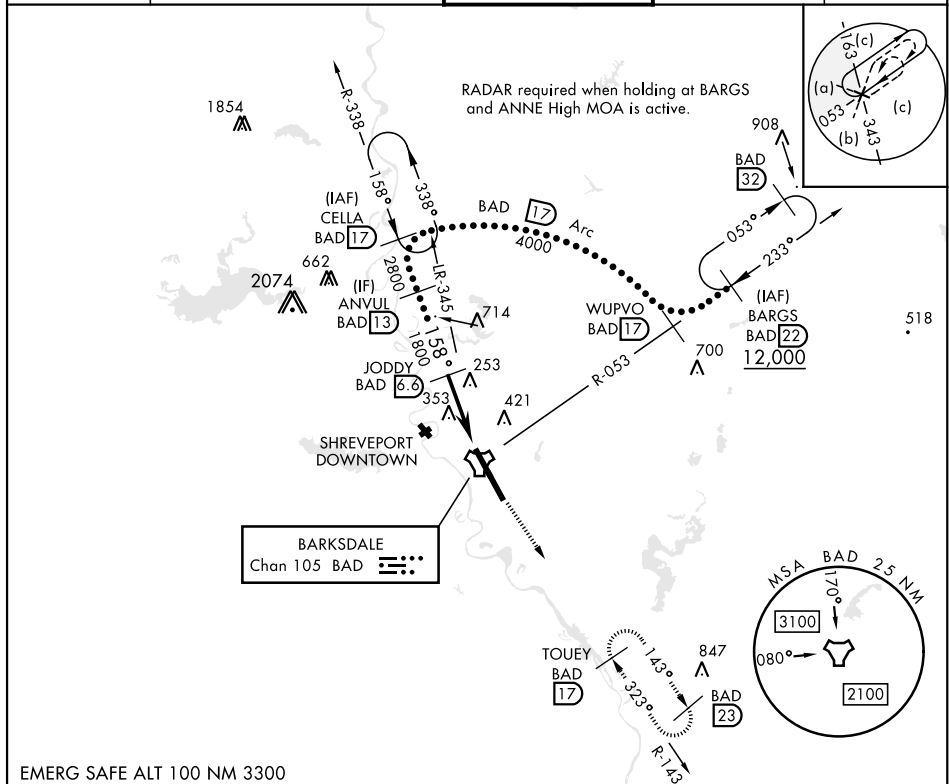
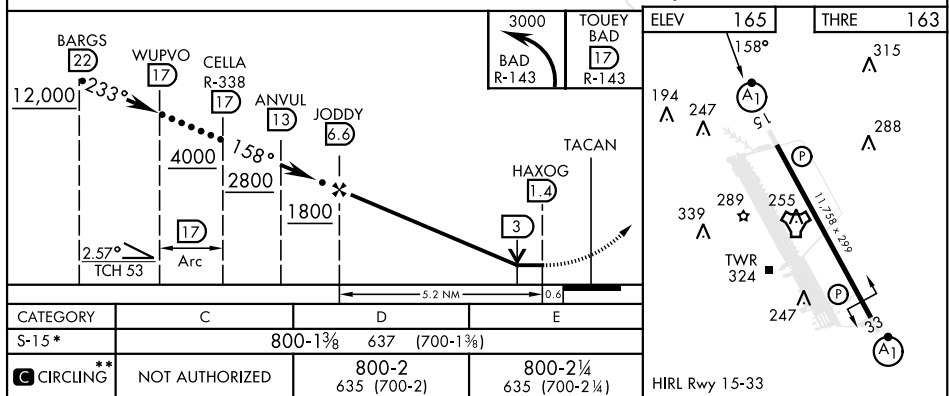


HI-TACAN Z RWY 15

TACAN Chan <b>105</b>	BAD <b>158°</b>	APCH CRS <b>158°</b>	Rwy Idg <b>11,758</b> THRE <b>163</b> Arpt Elev <b>165</b>	[USAF]	BARKSDALE AFB (KBAD)	
* When ALS inop, increase CAT CDE vis to 1¾ miles. ** Circling not authorized W of Rwy.				ALSF-1 	MISSED APPROACH: Climb to 3000 via BAD R-143 direct TOUEY and hold.	
ATIS <b>307.025</b>	SHREVEPORT APP CON 320°-152° <b>123.75 360.725</b> 153°-319° <b>119.9 335.55</b>		TOWER★ <b>128.25 278.3</b>		GND CON <b>121.8 253.5</b>	ASR



EMERG SAFE ALT 100 NM 3300



BOSSIER CITY, LOUISIANA

32°30'N-93°40'W

BARKSDALE AFB (KBAD)

## HI-TACAN Z RWY 15

Amdt 8 25JUN15

HIRL Rwy 15-33

SC-4. 07 AUG 2025 to 04 SEP 2025

SC-4, 07 AUG 2025 to 04 SEP 2025