

HI-ILS or LOC Y RWY 33

LOC I-BAD 109.9	APCH CRS 329°	Rwy Idg 11,758 THRE 161 Arpt Elev 165	[USAF]	BARKSDALE AFB (KBAD)
---------------------------	-------------------------	--	--------	----------------------

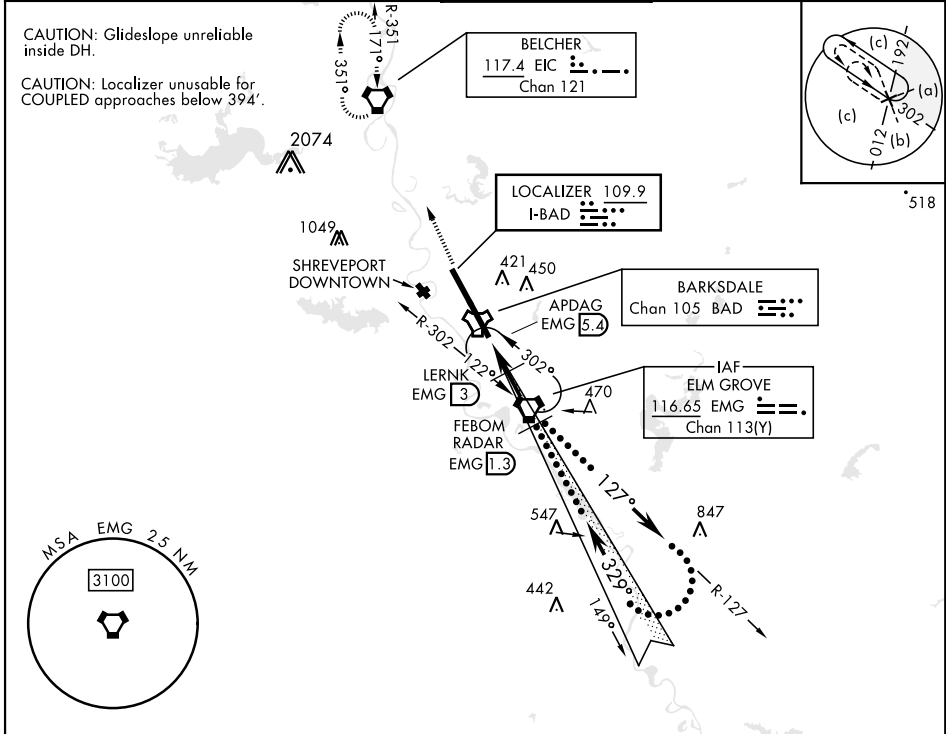
DME or RADAR required

* When ALS inop, increase CAT CDE RVR to 40 and vis to 3/4 mile.
** When ALS inop, increase CAT CDE RVR to 60 and vis to 1 1/8 miles.
*** Circling not authorized W of Rwy.

ALSF-1

MISSED APPROACH: Climb to 3100 direct to EIC VORTAC and hold.

ATIS 307.025	SHREVEPORT APP CON 320°-152° 123.75 360.725 153°-319° 119.9 335.55	TOWER ★ 128.25 278.3	GND CON 121.8 253.5	ASR
------------------------	--	--------------------------------	-------------------------------	-----



EMERG SAFE ALT 100 NM 3300

3100 ↑ EIC

EMG VORTAC

12,000

127°

329°

1000

2200

APDAG EMG 5.4

LERNK EMG 3

FEBOM RADAR EMG 1.3

GS 2.50° TCH 49

0.6 NM

2.4 NM

4.3 NM

Remain within 23 NM

Right at 8000

CATEGORY	C	D	E
S-ILS 33*	361/24	200 (200-1/2)	
S-LOC 33*	560/35	399 (400-%)	
CIRCLING ***	NOT AUTHORIZED	760-2 595 (600-2)	780-2 1/4 615 (700-2 1/4)

ELEV 165 THRE 161

247
288
255
289
339
TWR 324
176
195
171
161
329°

HIRL Rwy 15-33

FAF to MAP 6.7 NM

Knots	120	140	160	180	200
Min:Sec	3:21	2:52	2:31	2:14	2:01

HI-ILS or LOC Y RWY 33