

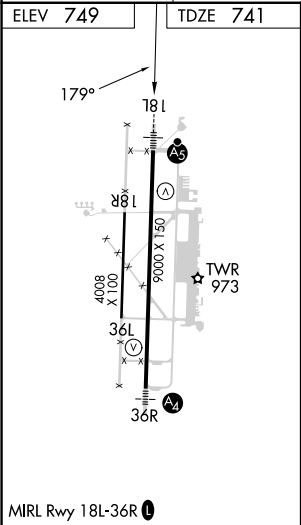
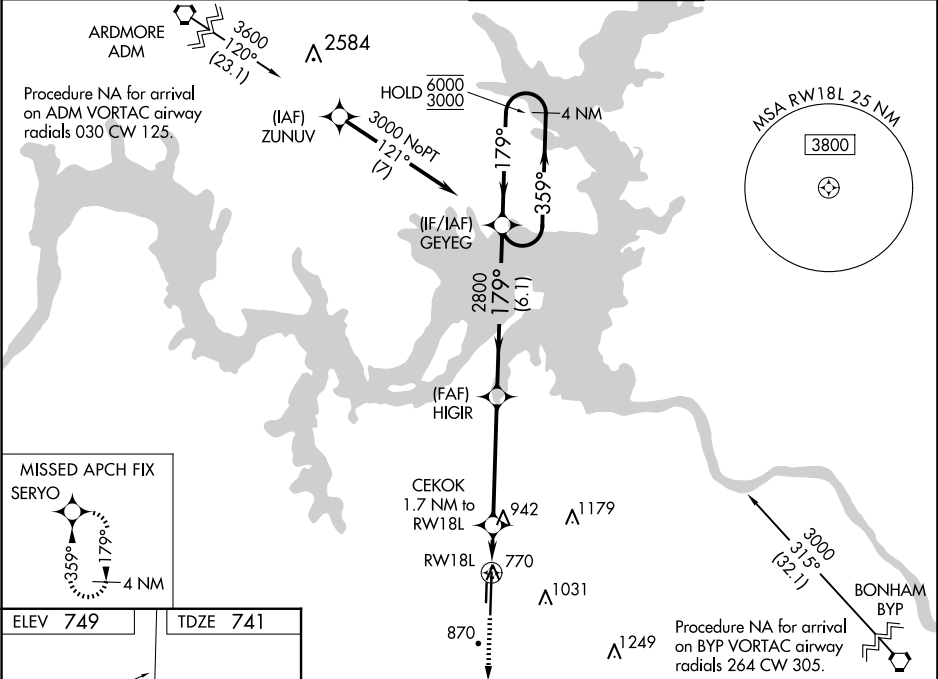
WAAS CH 86528 W18A	APP CRS 179°	Rwy Idg 9000 TDZE 741 Apt Elev 749
--	------------------------	---

RNAV (GPS) RWY 18L

NORTH TEXAS RGNL/PERRIN FLD (GYI)

RNP APCH - GPS.		MALSR	MISSED APPROACH: Climb to 3000 direct SERYO and hold.
<div><div></div><div></div></div> <div>Circling Rwy 18R, 36L NA at night. For uncompensated Baro-VNAV systems, LNAV/VNAV NA below -10°C or above 54°C. For inop ALS, increase LNAV/VNAV all Cats visibility to ½ SM.</div>		<div><div></div><div></div></div>	

ATIS 118.775	FORT WORTH CENTER 124.75 323.0	NORTH TEXAS TOWER ★ 120.575 (CTAF) 233.7	GND CON 124.125
------------------------	--	---	---------------------------



3000	SERYO	VGSI and RNAV glidepath not coincident (VGSI angle 3.00°/TCH 48).			
↑	✴	4 NM Holding Pattern			
HIGIR 2800		CEKOK 1.7 NM to RW18L		GEYEG	
RW18L		1320		2800	
1.7 NM		4.6 NM		6.1 NM	
CATEGORY		A		B	
LPV DA		941-½		200 (200-½)	
LNAV/VNAV DA		1015-½		274 (300-½)	
LNAV MDA		1200-½ 459 (500-½)		1200-7/8 459 (500-7/8)	
CIRCLING		1300-1 551 (600-1)		1400-1¾ 651 (700-1¾) 1540-2½ 791 (800-2½)	