

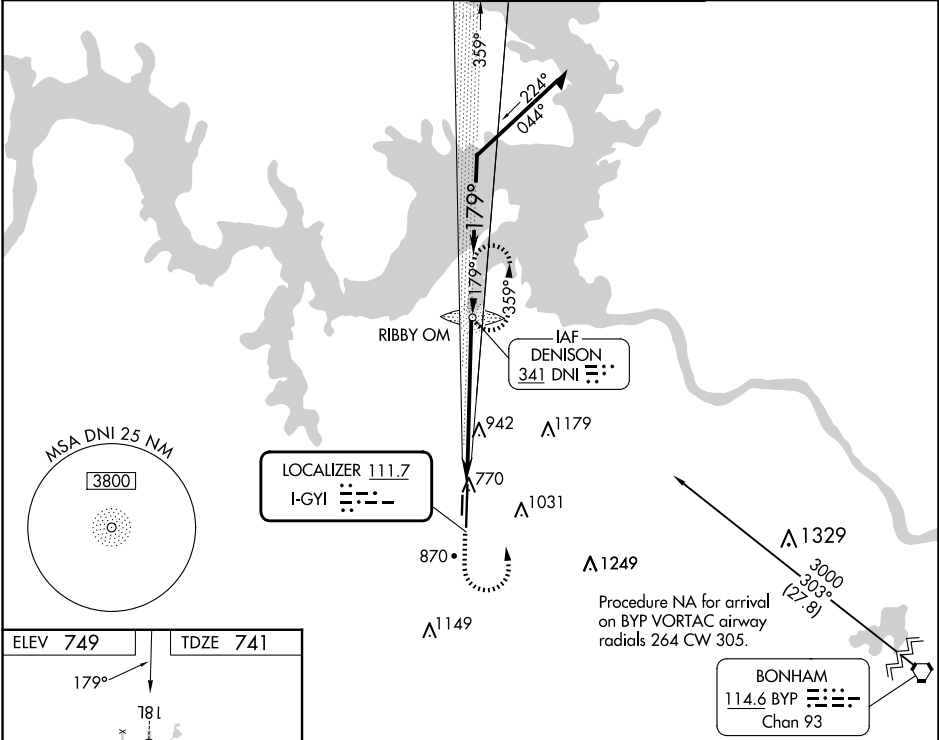
| | | | | |
|-----|--------------|-------------|----------|------------|
| LOC | I-GYI | APP CRS | Rwy Idg | 9000 |
| | 111.7 | 179° | TDZE | 741 |
| | | | Apt Elev | 749 |

ILS or LOC RWY 18L

NORTH TEXAS RGNL/PERRIN FLD (GYI)

| | | |
|---|-------------------------------------|---|
| ADF required. | MALSR | MISSED APPROACH: Climb to 2000 then climbing left turn to 2800 direct DNI NDB and hold. |
| <div><div>NA</div><div>Circling Rwy 18R, 36L NA at night. Autopilot coupled approach NA below 1900. For inop ALS, increase S-LOC-18L Cat C/D visibility to 1¾ SM.</div></div> | <div><div>A5</div><div></div></div> | |

| | | | |
|----------------|---------------------|-----------------------------|----------------|
| ATIS | FORT WORTH CENTER | NORTH TEXAS TOWER ★ | GND CON |
| 118.775 | 124.75 323.0 | 120.575 (CTAF) 233.7 | 124.125 |



MIRL Rwy 18L-36R

FAF to MAP 6 NM

| Knots | 60 | 90 | 120 | 150 | 180 |
|---------|------|------|------|------|------|
| Min:Sec | 6:00 | 4:00 | 3:00 | 2:24 | 2:00 |

| | | | | |
|---|-------------------|-------------|----------------------|----------------------|
| 2000 | 2800 | DNI | DNI NDB RIBBY OM | Remain within 10 NM |
| VGSI and ILS glidepath not coincident (VGSI Angle 3.00/TCH 48). | | | | |
| <div><div>2740</div><div>359°</div><div>179°</div><div>2800</div><div>2800</div><div>GS 3.00° TCH 55</div><div>6 NM</div></div> | | | | |
| CATEGORY | A | B | C | D |
| S-ILS 18L | 941-½ 200 (200-½) | | | |
| S-LOC 18L | 1220-½ | 479 (500-½) | 1220-1 | 479 (500-1) |
| <input checked="" type="checkbox"/> CIRCLING | 1300-1 | 551 (600-1) | 1400-1¾ 651 (700-1¾) | 1540-2½ 791 (800-2½) |