

VOR RWY 15
SHERIDAN COUNTY (SHR)

ASOS 135,175	SALT LAKE CENTER 127.75 351.9	UNICOM 123.0 (CTAF) ①
------------------------	---	---------------------------------

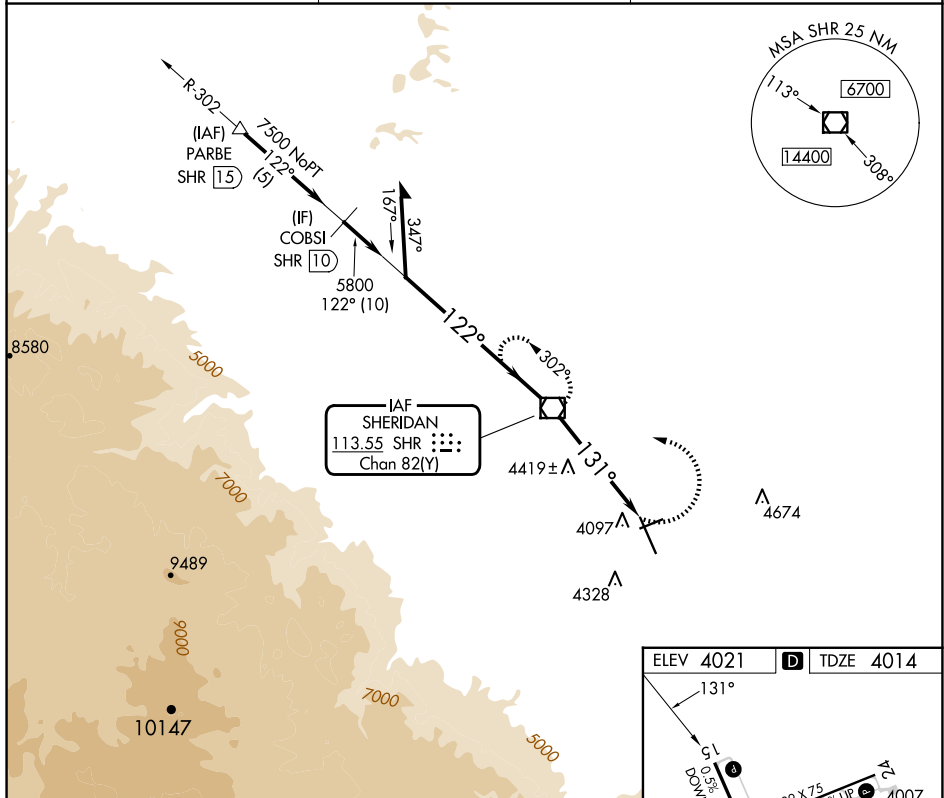


Diagram illustrating a runway layout with various taxiways and runways. Key features include:

- Runway 800 X 100 (D-4.5 UP)
- Runway 5037 (1.6% UP)
- Runway 5039 (1.6% UP)
- Runway 5038 (1.6% UP)
- Runway 5036 (1.6% UP)
- Runway 5035 (1.6% UP)
- Runway 5034 (1.6% UP)
- Runway 5033 (1.6% UP)
- Runway 5032 (1.6% UP)
- Runway 5031 (1.6% UP)
- Runway 5030 (1.6% UP)
- Runway 5029 (1.6% UP)
- Runway 5028 (1.6% UP)
- Runway 5027 (1.6% UP)
- Runway 5026 (1.6% UP)
- Runway 5025 (1.6% UP)
- Runway 5024 (1.6% UP)
- Runway 5023 (1.6% UP)
- Runway 5022 (1.6% UP)
- Runway 5021 (1.6% UP)
- Runway 5020 (1.6% UP)
- Runway 5019 (1.6% UP)
- Runway 5018 (1.6% UP)
- Runway 5017 (1.6% UP)
- Runway 5016 (1.6% UP)
- Runway 5015 (1.6% UP)
- Runway 5014 (1.6% UP)
- Runway 5013 (1.6% UP)
- Runway 5012 (1.6% UP)
- Runway 5011 (1.6% UP)
- Runway 5010 (1.6% UP)
- Runway 5009 (1.6% UP)
- Runway 5008 (1.6% UP)
- Runway 5007 (1.6% UP)
- Runway 5006 (1.6% UP)
- Runway 5005 (1.6% UP)
- Runway 5004 (1.6% UP)
- Runway 5003 (1.6% UP)
- Runway 5002 (1.6% UP)
- Runway 5001 (1.6% UP)
- Runway 5000 (1.6% UP)

Additional labels include:

- HIRL Rwy 15-33
- MIRL Rwy 6-24
- REIL Rws 6, 15, and 24

FAF to MAP 5 NM					
Knots	60	90	120	150	180
Min:Sec	5:00	3:20	2:30	2:00	1:40

NW-1, 07 AUG 2025 to 04 SEP 2025

NW-1, 07 AUG 2025 to 04 SEP 2025