

SHERIDAN, WYOMING

AL-388 (FAA)

25107

WAAS CH <b>65699</b> <b>W33A</b>	APP CRS <b>326°</b>	Rwy Idg <b>8301</b> TDZE <b>3985</b> Apt Elev <b>4021</b>
--	------------------------	---

RNAV (GPS) RWY 33  
SHERIDAN COUNTY (SHR)

RNP APCH.

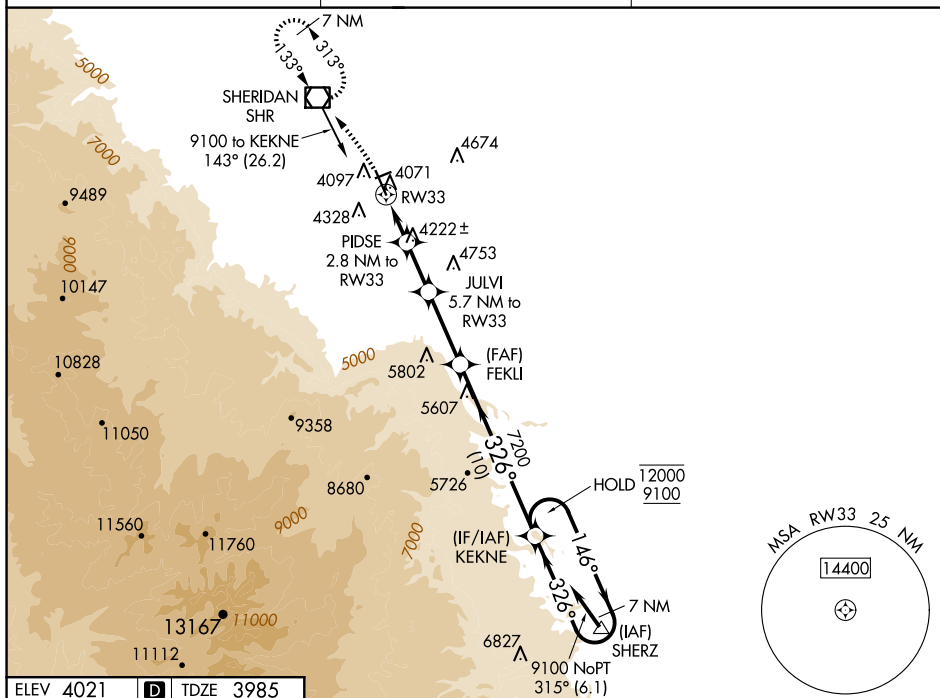
MALSR

**MISSED APPROACH:** Climbing left turn to 7300 direct SHR VOR/DME and hold, continue climb-in-hold to 7300.

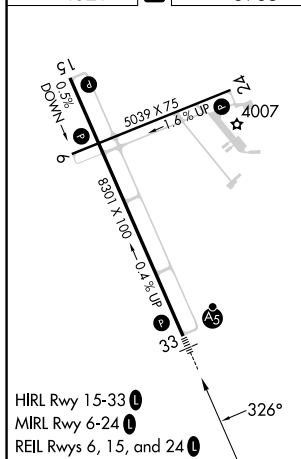
**T**  
**A**  
**☑** -19°C

Circling to Rwy 24 NA at night. Baro-VNAV NA.  
When local altimeter setting not received, procedure NA.

ASOS <b>135.175</b>	SALT LAKE CENTER <b>127.75 351.9</b>	UNICOM <b>123.0 (CTAF) 1</b>
------------------------	---	---------------------------------



ELEV 4021	<b>D</b>	TDZE 3985
-----------	----------	-----------



<div style="display: flex; align-items: center;"> <div style="margin-right: 10px;"> 7300  </div> <div> SHR  </div> </div>					
* LNAV only * 1.1 NM to RW33 RW33 1.1 1.7 NM 2.9 NM 4.3 NM 10 NM GP 3.00° TCH 55					
CATEGORY		A	B	C	D
LPV DA		4205-1/2		220 (200-1/2)	
LNAV/VNAV DA		4380-3/4		395 (400-3/4)	
LNAV MDA		4380-1/2	395 (400-1/2)	4380-5/8	395 (400-5/8)
CIRCLING		4600-1 579 (600-1)	4640-1 619 (700-1)	4860-2 1/2 839 (900-2 1/2)	5220-3 1199 (1200-3)

SHERIDAN, WYOMING

Amdt 1A 17JUN21

44°46'N-106°59'W

SHERIDAN COUNTY (SHR)

RNAV (GPS) RWY 33

NW-1, 07 AUG 2025 to 04 SEP 2025