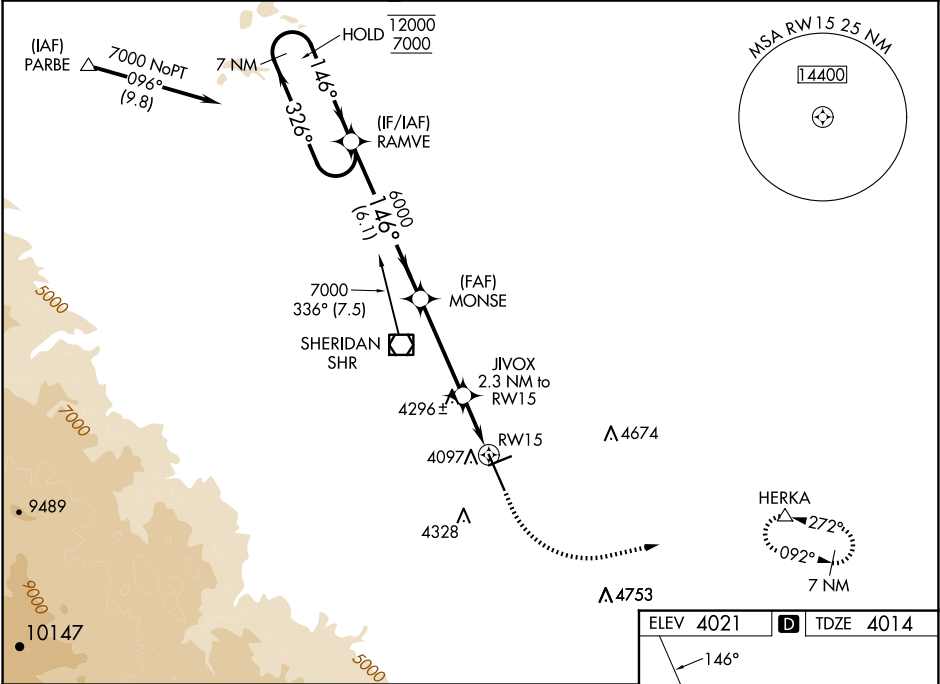


WAAS CH <b>81899</b> <b>W15A</b>	APP CRS <b>146°</b>	Rwy Idg <b>8301</b> TDZE <b>4014</b> Apt Elev <b>4021</b>
--	------------------------	---

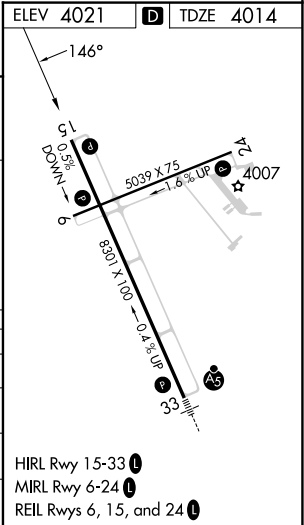
RNAV (GPS) RWY 15  
SHERIDAN COUNTY (SHR)

RNP APCH.	MISSED APPROACH: Climb to 4500 then climbing left turn to 7100 direct HERKA and hold, continue climb-in-hold to 7100.
<div><div>▼</div><div>▲</div><div>✖</div></div> <div>Circling to Rwy 24 NA at night. For uncompensated Baro-VNAV systems, LNAV/VNAV NA below -26°C or above 51°C. When local altimeter setting not received, procedure NA.</div> <div>-19°C</div>	

ASOS <b>135.175</b>	SALT LAKE CENTER <b>127.75 351.9</b>	UNICOM <b>123.0 (CTAF) 1</b>
------------------------	---	---------------------------------



7 NM Holding Pattern		RAMVE		MONSE		JIVOX 2.3 NM to RW15		HERKA	
12000 ← 326°				6000		4500		7100	
7000 → 146°						*1.6 NM to RW15		*LNAV only	
GP 3.00° TCH 50				6000		*4780		RW15	
		6.1 NM		3.8 NM		0.7 NM		1.6 NM	
CATEGORY	A	B	C	D					
LPV DA	4264-3/4		250 (300-3/4)						
LNAV/ VNAV DA	4292-7/8		278 (300-7/8)						
LNAV MDA	4560-1 546 (600-1)		4560-1 5/8 546 (600-1 5/8)						
CIRCLING	4600-1 579 (600-1)		4640-1 619 (700-1)		4860-2 1/2 839 (900-2 1/2)		5220-3 1199 (1200-3)		



NW-1, 07 AUG 2025 to 04 SEP 2025

NW-1, 07 AUG 2025 to 04 SEP 2025