

WAAS  
CH **90205**  
**W33A**

APP CRS  
**329°**

Rwy Idg  
TDZE **165**  
Apt Elev **166**

**RNAV (GPS) RWY 33**

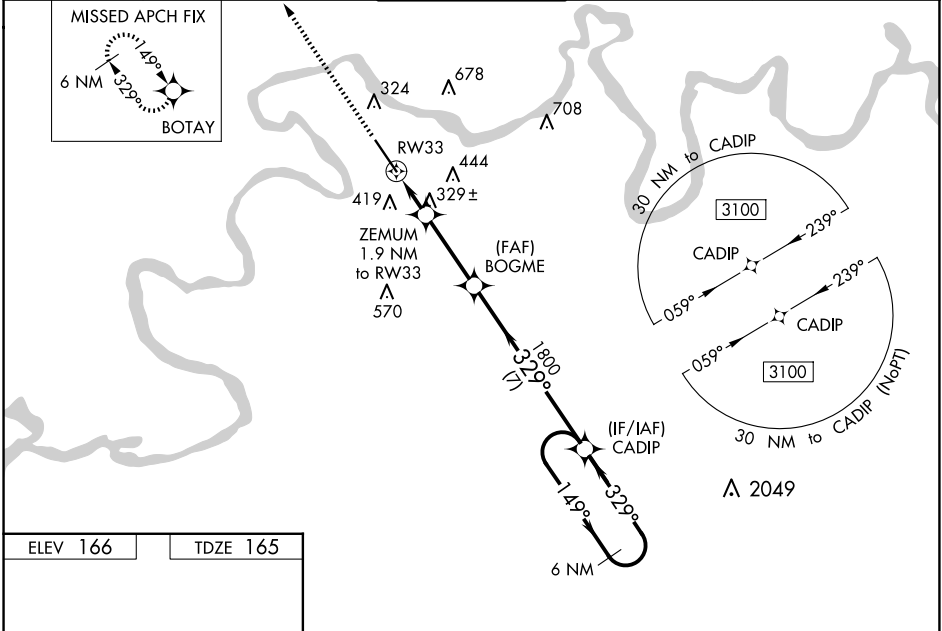
CRAIG FLD (SEM)

**⚠** Baro-VNAV NA when using Montgomery altimeter setting. For uncompensated Baro-VNAV systems, LNAV/VNAV NA below -15°C (5°F) or above 54°C (130°F). For inoperative MALS, increase LNAV/VNAV all Cats visibility to ¾ mile and LNAV Cats C and D visibility to 1 ½ mile. DME/DME RNP-0.3 NA. VDP NA with Montgomery altimeter setting. When local altimeter setting not received, use Montgomery altimeter setting and increase all DA 78 feet, all MDA 80 feet, LNAV Cats C and D visibility ½ mile and increase Circling Cat C visibility ½ mile and Cat D visibility ¼ mile. For inoperative MALS, when using Montgomery altimeter setting, increase LPV all Cats visibility to ¾ mile, LNAV/VNAV all Cats visibility to 1 mile, LNAV Cat C and D visibility to 1 ½ mile.

MALS

MISSED APPROACH:  
Climb to 2800 direct  
BOTAY and hold.

AWOS-3PT <b>119.15</b>	MONTGOMERY APP CON ★ <b>124.0 363.025</b>	CRAIG TOWER★ <b>120.85</b>	GND CON <b>121.675</b>	UNICOM <b>122.7 (CTAF) ①</b>
---------------------------	--	-------------------------------	---------------------------	---------------------------------



ELEV 166

TDZE 165

2800 BOTAY

VGSI and RNAV glidepath not coincident  
(VGSI Angle 3.00/TCH 56).

\*LNAV only.

6 NM Holding Pattern

CATEGORY	A	B	C	D
LPV DA	365-¾		200 (200-¾)	
LNAV/ VNAV DA	462-¾		297 (300-¾)	
LNAV MDA	580-¾ 415 (500-¾)		580-1 415 (500-1)	
CIRCLING	660-1 494 (500-1)	760-1 594 (600-1)	760-1½ 594 (600-1½)	1040-2¾ 874 (900-2¾)