

WAAS CH 69435 W15A	APP CRS 149°	Rwy Idg TDZE 166 Apt Elev 166	8014
--	------------------------	---	-------------

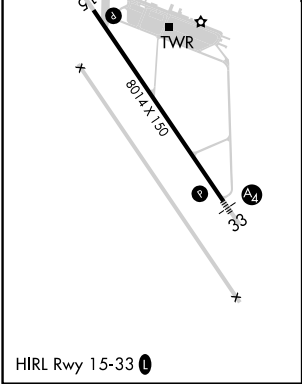
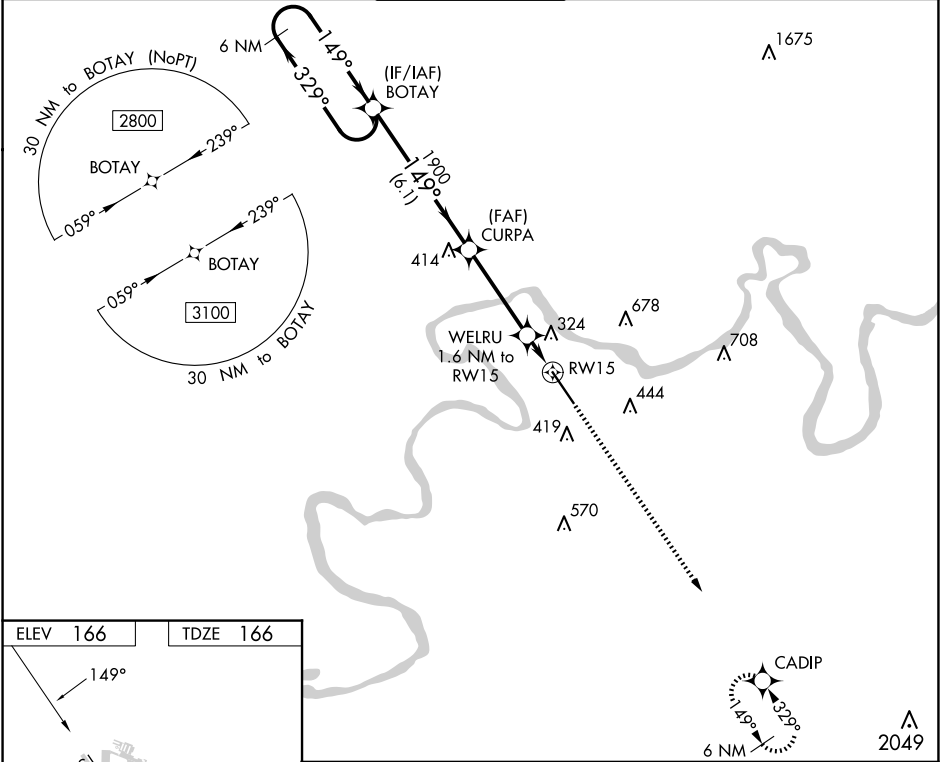
RNAV (GPS) RWY 15

CRAIG FLD (SEM)

⚠ Baro-VNAV NA when using Montgomery altimeter setting. For uncompensated Baro-VNAV systems, LNAV/VNAV NA below -15°C (5°F) or above 54°C (130°F). DME/DME RNP-0.3 NA. VDP NA with Montgomery altimeter setting. When local altimeter setting not received, use Montgomery altimeter setting and increase all DA 78 feet, all MDA 80 feet, LPV all Cats visibility ¾ mile, LNAV/VNAV all Cats visibility and LNAV Cats C and D visibility ¼ mile, Circling Cat C visibility ½ mile and Cat D visibility ¼ mile.

MISSED APPROACH:
Climb to 3100 direct CADIP and hold.

AWOS-3PT 119.15	MONTGOMERY APP CON ★ 124.0 363.025	CRAIG TOWER★ 120.85	GND CON 121.675	UNICOM 122.7 (CTAF) 0
---------------------------	--	-------------------------------	---------------------------	---------------------------------



6 NM Holding Pattern BOTAY				VGSI and RNAV glidepath not coincident (VGSI Angle 3.00/TCH 50).				3100	CADIP
2800 ← 329°				CURPA 1900				WELRU 1.6 NM to RW15	
GP 3.00° TCH 45				1900				*1.1 NM to RW15	
				*720				RW15	
				6.1 NM				0.5 NM	
				3.7 NM				1.1 NM	
CATEGORY				A				D	
LPV DA				416-¾				250 (300-¾)	
LNAV/VNAV DA				569-1⅓				403 (500-1⅓)	
LNAV MDA				560-1				394 (400-1⅓)	
CIRCLING				660-1				760-1	
				494 (500-1)				594 (600-1)	
				760-1½				1040-2¾	
				594 (600-1½)				874 (900-2¾)	