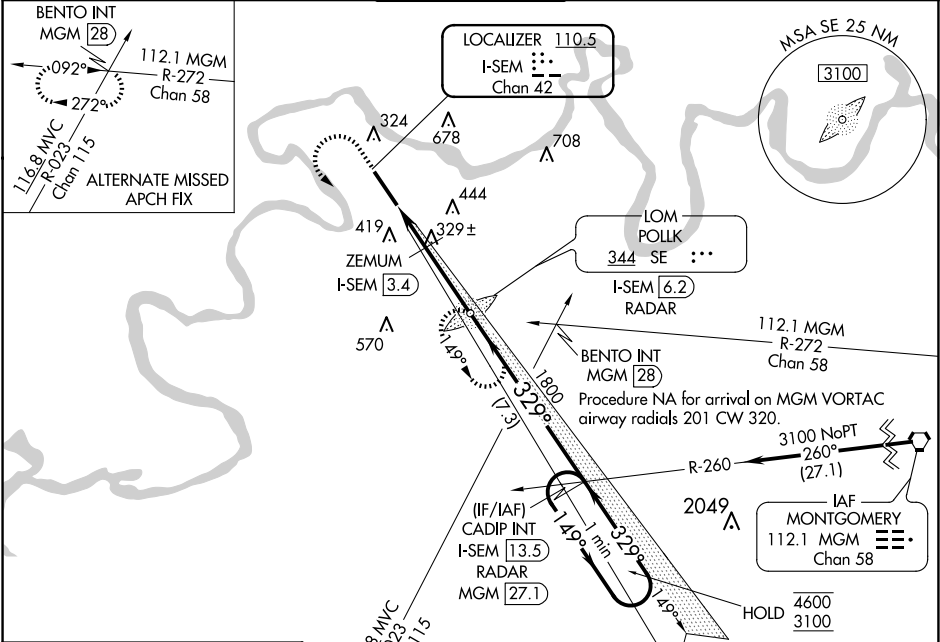


LOC/DME I-SEM 110.5 Chan 42	APP CRS 329°	Rwy Idg TDZE 165 Apt Elev 166	8014
---	------------------------	---	-------------

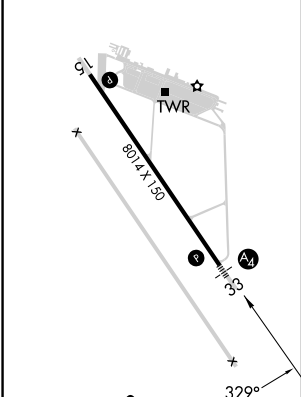
ILS Z or LOC Z RWY 33
CRAIG FLD (SEM)

ADF required.	MALS	MISSED APPROACH: Climb to 1000 then climbing left turn to 3100 direct POLK LOM/6.2 DME/RADAR and hold, continue climb-in-hold to 3100.
▼ Inop table does not apply to S-ILS Rwy 33. ▲ NA For inop ALS, increase S-LOC 33 Cat E visibility to 1½ SM and ZEMUM fix minimums S-LOC 33 Cats C-E visibility to 1½ SM.	☯	

AWOS-3PT 119.15	MONTGOMERY APP CON ★ 124.0 363.025	CRAIG TOWER★ 120.85	GND CON 121.675	UNICOM 122.7 (CTAF) ①
---------------------------	--	-------------------------------	---------------------------	---------------------------------



ELEV 166	TDZE 165
----------	----------



FAF to MAP 4.7 NM						
Knots	60	90	120	150	180	
Min:Sec	4:42	3:08	2:21	1:53	1:34	
S-ILS 33		365-¾ 200 (200-¾)				415-¾ 250 (300-¾)
S-LOC 33		720-¾ 555 (600-¾)	720-1⅜ 555 (600-1½)			
CIRCLING		720-1 554 (600-1)	760-1 594 (600-1)	760-1½ 594 (600-1½)	1040-2¾ 874 (900-2¾)	1040-3 874 (900-3)
ZEMUM FIX MINIMUMS						
S-LOC 33		580-¾ 415 (500-¾)	580-1 415 (500-1)			
CIRCLING		660-1 494 (500-1)	760-1 594 (600-1)	760-1½ 594 (600-1½)	1040-2¾ 874 (900-2¾)	1040-3 874 (900-3)