

WAAS CH <b>89057</b> <b>W32A</b>	APP CRS <b>315°</b>	Rwy Ldg TDZE <b>22</b> Apt Elev <b>22</b>
--	------------------------	---

RNAV (GPS) Y RWY 32L

BOEING FLD/KING COUNTY INTL (BFI)

RNP APCH - GPS.

RADAR required for missed approach.

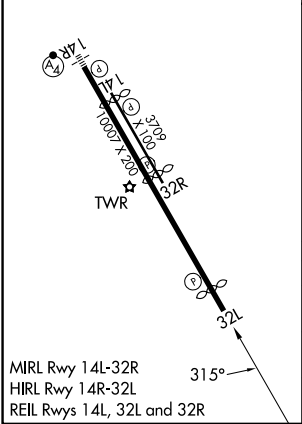
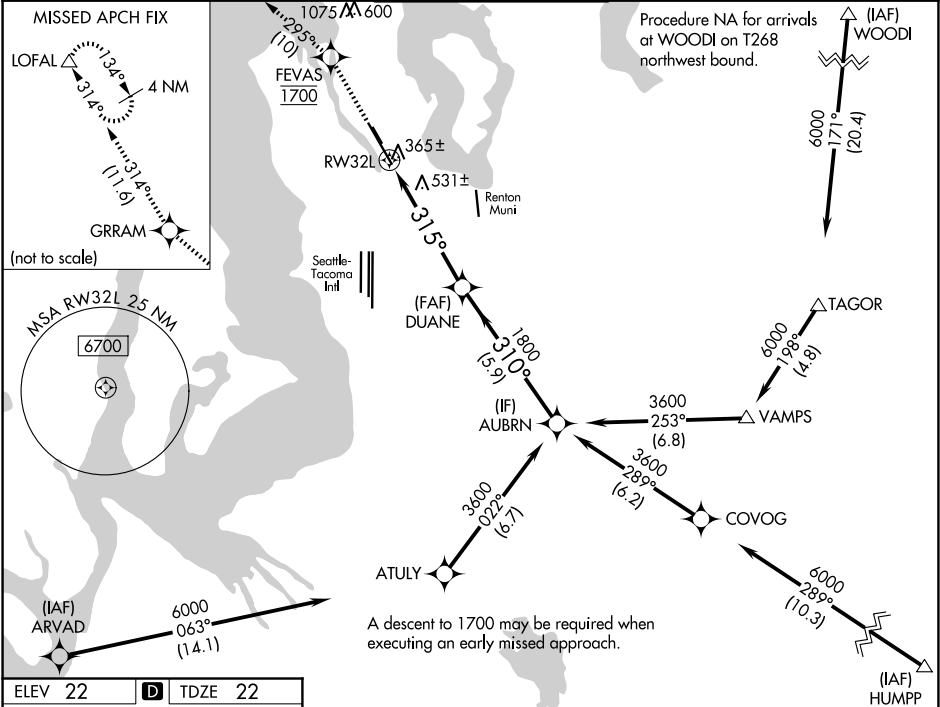
▼




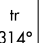
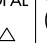
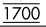




▲

For uncompensated Baro-VNAV systems, LNAV/VNAV NA below -6°C or above 54°C. Rwy 32L helicopter visibility reduction below ¾ SM NA.

MISSED APPROACH: Climb direct FEVAS, cross FEVAS at 1700, then climb to 3000 on the RNAV missed approach route to LOFAL and hold.

ATIS <b>127.75</b>	SEATTLE APP CON <b>125.9 306.9</b>	BOEING TOWER <b>120.6 257.8</b>	GND CON <b>121.9</b>	CLNC DEL <b>132.4</b>
-----------------------	---------------------------------------	------------------------------------	-------------------------	--------------------------



					VGSI and RNAV glidepath not coincident (VGSI Angle 3.10/TCH 66).
FEVAS	3000	GRRAM	tr 314°	LOFAL	
					

NW-1, 07 AUG 2025 to 04 SEP 2025

NW-1, 07 AUG 2025 to 04 SEP 2025