

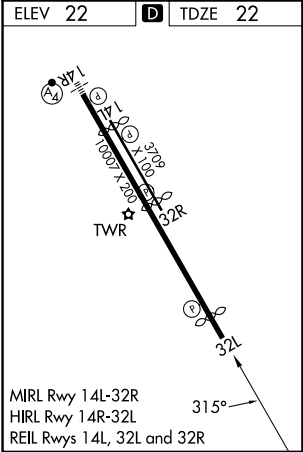
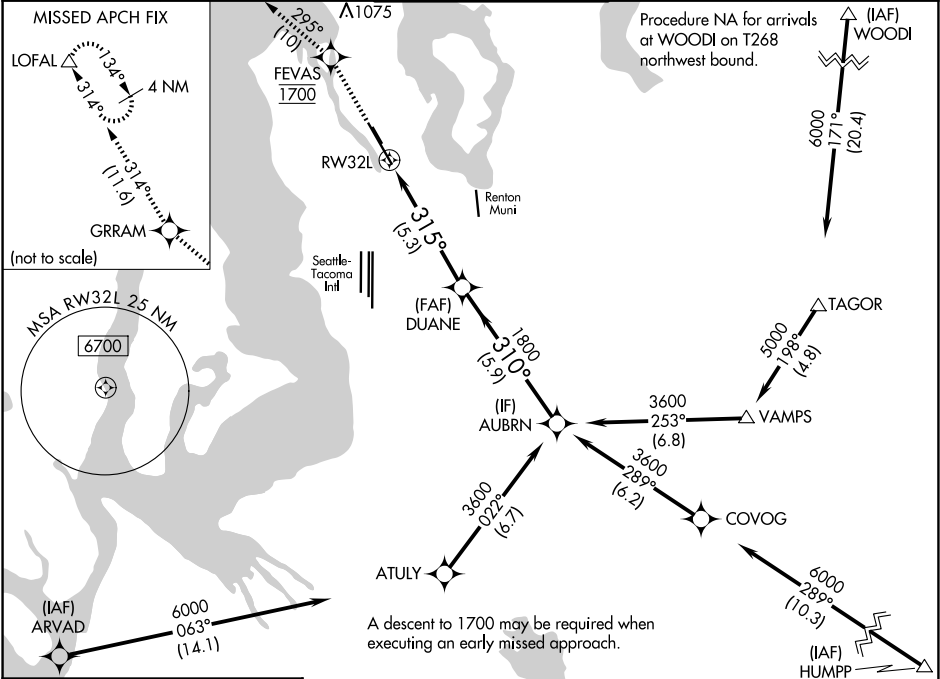
APP CRS	Rwy Ldg	9120
315°	TDZE	22
	Apt Elev	22

RNAV (RNP) Z RWY 32L

BOEING FLD/KING COUNTY INTL (BFI)

RNP AR APCH - GPS.	MISSED APPROACH: Climb direct FEVAS, cross FEVAS at 1700, then climb to 3000 on the RNAV missed approach route to LOFAL and hold.
RADAR required for missed approach.	
<div><div></div><div>For uncompensated Baro-VNAV systems, procedure NA below -6°C or above 54°C.</div></div>	

ATIS 127.75	SEATTLE APP CON 125.9 306.9	BOEING TOWER 120.6 257.8	GND CON 121.9	CLNC DEL 132.4
----------------	--------------------------------	-----------------------------	------------------	-------------------



↑	FEVAS 1700	3000	tr 295°	GRRAM	tr 314°	LOFAL △	
VGSI and RNAV glidepath not coincident (VGSI Angle 3.10/TCH 66).							
<p>RW32L 315° 1800 310° 3600 5.3 NM 5.9 NM GP 3.10° TCH 49</p>							
CATEGORY	A		B		C		D
RNP 0.10 DA	567-1 ⁵ / ₈		545 (600-1%)				
RNP 0.15 DA	681-1 ⁷ / ₈		659 (700-1%)				
RNP 0.30 DA	836-2 ¹ / ₂		814 (900-2 ¹ / ₂)				
AUTHORIZATION REQUIRED							