

APP CRS  
**135°**

Rwy Ldg  
TDZE  
Apt Elev  
**9120**  
**18**  
**22**

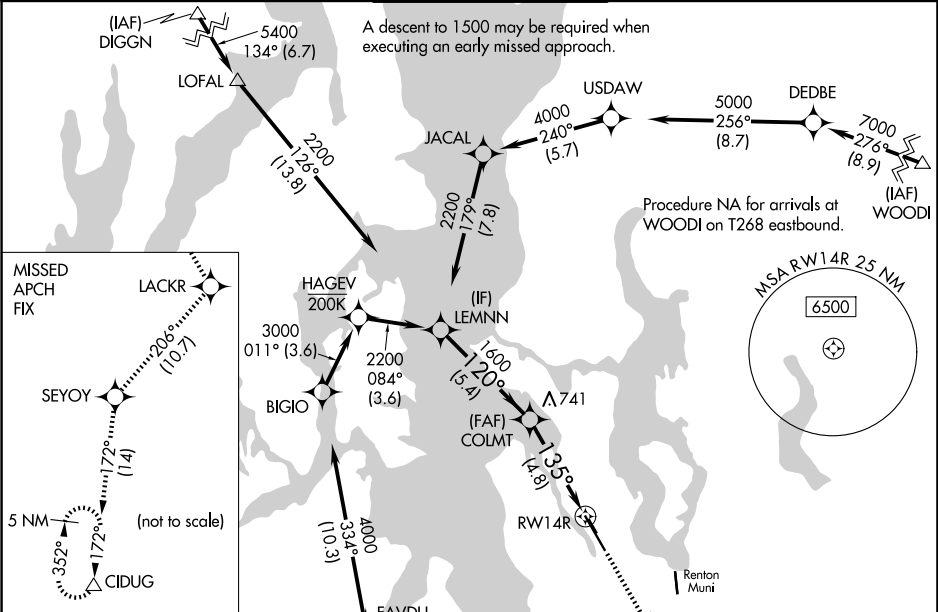
**RNAV (RNP) Z RWY 14R**  
BOEING FLD/KING COUNTY INTL (BFI)

RNP AR APCH - GPS.  
RADAR required for missed approach.

For uncompensated Baro-VNAV systems, procedure NA below -6°C or above 54°C. For inop ALS, increase RNP 0.15 visibility to 1 3⁄8 SM.

MALSF  
MISSED APPROACH: Climb direct OCEZE, cross OCEZE at 1500, then climb to 5000 on the RNAV missed approach route to CIDUG and hold.

ATIS <b>127.75</b>	SEATTLE APP CON <b>125.9 306.9</b>	BOEING TOWER <b>120.6 257.8</b>	GND CON <b>121.9</b>	CLNC DEL <b>132.4</b>
-----------------------	---------------------------------------	------------------------------------	-------------------------	--------------------------



ELEV 22 TDZE 18

MIRL Rwy 14L-32R  
HIRL Rwy 14R-32L  
REIL Rws 14L, 32L and 32R

CATEGORY	A	B	C	D
RNP 0.10 DA		448/50	430 (500-1)	
RNP 0.15 DA		522-1 1⁄4	504 (500-1 1⁄4)	
RNP 0.30 DA		708-1 3⁄4	690 (700-1 3⁄4)	

**AUTHORIZATION REQUIRED**