

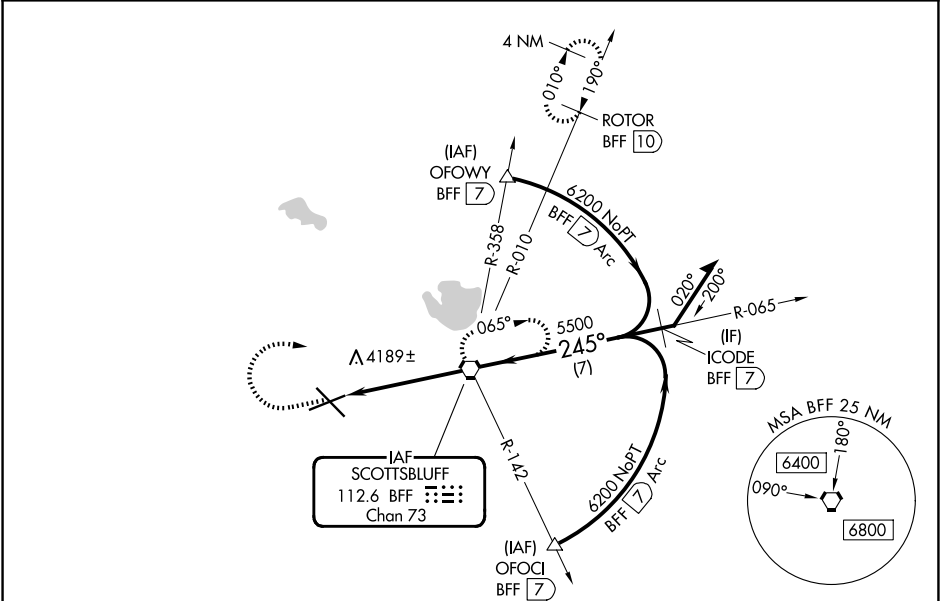
VORTAC BFF	APP CRS	Rwy Ldg	8002
112.6	245°	TDZE	3967
Chan 73		Apt Elev	3967

VOR or TACAN RWY 23
SCOTTSLUFF/WESTERN NEBRASKA RGNL/WM B HEILIG FLD (BFTF)

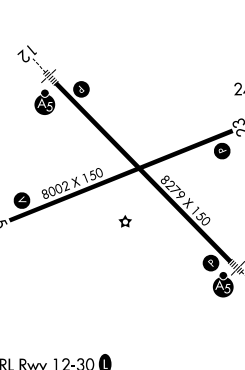


When local altimeter setting not received, use Alliance altimeter setting: increase all MDAs 100 feet and visibility Cats C and D ½ SM. VDP NA when using Alliance altimeter setting. Visibility reduction by helicopters NA.

MISSED APPROACH: Climb to 5000 then climbing right turn to 6500 direct BFF VORTAC and hold (TACAN aircraft continue climb to 7300 via BFF R-010 to ROTOR 10 DME and hold north, right turn 190° inbound).

ASOS 121.025	DENVER CENTER 127.95 338.2	UNICOM 123.0 (CTAF) 0
-----------------	-------------------------------	--------------------------



5000	6500	BFF				
↑	↗	⬡				
			BFF VORTAC	Remain within 10 NM		
				065°	6200	
				245°	5500	
				✕		
			BFF 3.1			
			1.5 NM	3.1 NM		
CATEGORY	A	B	C	D		
S-23	4500-1	533 (600-1)	4500-1½ 533 (600-1½)	4500-1¾ 533 (600-1¾)		
CIRCLING	4500-1	533 (600-1)	4560-1½ 593 (600-1½)	4740-2½ 773 (800-2½)		

ELEV 3967		D		TDZE 3967	
					
HIRL Rwy 12-30 					
MIRL Rwy 5-23 					
FAF to MAP 4.7 NM					
Knots	60	90	120	150	180
Min:Sec	4:42	3:08	2:21	1:53	1:34

NC-2, 07 AUG 2025 to 04 SEP 2025

NC-2, 07 AUG 2025 to 04 SEP 2025