

LOC/DME I-RMT <b><u>110.35</u></b> Chan <b>40</b> (Y)	APP CRS <b>126°</b>	Rwy Ldg TDZE Apt Elev	<b>8279</b> <b>3963</b> <b>3967</b>
---	------------------------	-----------------------------	---

ILS or LOC/DME RWY 12  
SCOTTSBLUFF/WESTERN NEBRASKA RGNL/WM B HEILIG FLD(BFF)

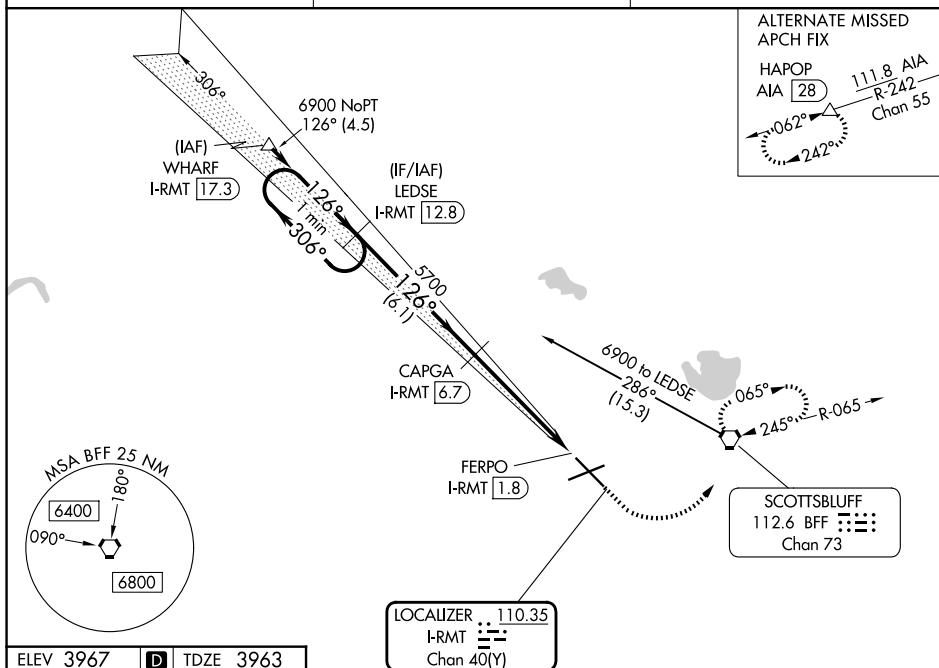
**T** When local altimeter setting not received, use Alliance altimeter setting and increase DA 91 feet; all MDAs 100 feet, and S-LOC 12 and Circling Cat B/C/D visibilities ¼ mile. For inoperative MALS R, when using Alliance altimeter setting, increase S-ILS 12 visibility to 1. VDP NA when using Alliance altimeter setting.

MALSR

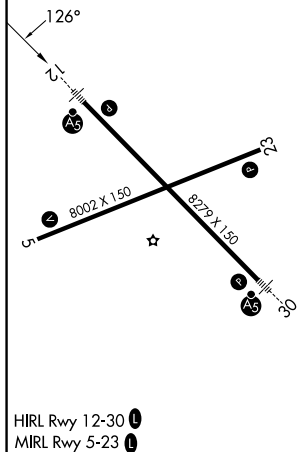


**MISSED APPROACH:** Climb to 4500 then climbing left turn to 6900 direct BFF VORTAC and hold, continue climb-in-hold to 6900.

ASOS  
**121,025**

DENVER CENTER  
127.95 338.2UNICOM  
123.0 (CTAF) **L**

ELEV 3967	<b>D</b>	TDZE 3963
-----------	----------	-----------



SCOTTSBLUFF, NEBRASKA  
Orig-B 30JAN20

SCOTTSBLUFF/WESTERN NEBRASKA RGNL/WM B HEILIG FLD (BFF)

41°52'N-103°36'W

ILS or LOC/DME RWY 12

NC-2, 07 AUG 2025 to 04 SEP 2025

NC-2, 07 AUG 2025 to 04 SEP 2025

ILS unusable from FERPO/1.8 DME inbound.

One Minute Holding Pattern

LEDSE I-RMT 12.8

CAPGA I-RMT 6.7

FERPO I-RMT 1.8

4500 6900 BFF

6900 ← 306° 126° → 126° 5700 5700

GS 3.00° TCH 57

6.1 NM 3.2 NM 1.7 NM 0.3

CATEGORY	A	B	C	D
S-ILS 12	4163-½ 200 (200-½)			
S-LOC 12	4640-½ 677 (700-½)		4640-1½ 677 (700-1½)	4640-1¾ 677 (700-1¾)
CIRCLING	4640-1 673 (700-1)		4640-2 673 (700-2)	4740-2½ 773 (800-2½)