

VOR/DME RWY 28

VOR/DME SVN 111.6 Chan 53	APCH CRS 282°	Rwy Idg 11,393 TDZE 41 Arprt Elev 41
---	-------------------------	---

[USA]

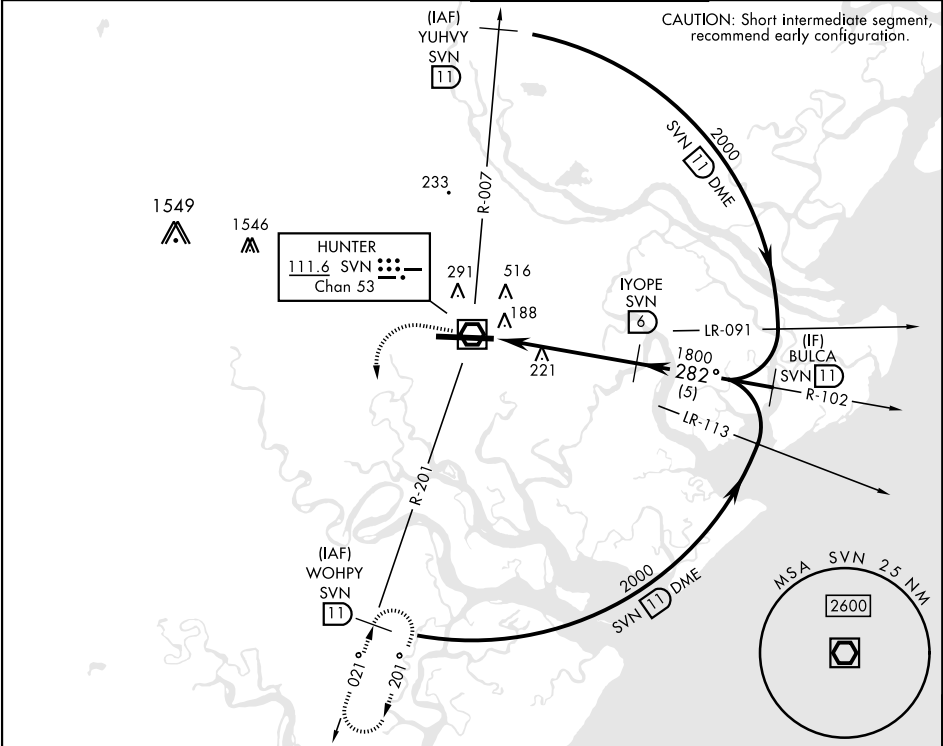
HUNTER AAF (KSVN)

V *When ALS inop, increase CAT AB RVR to 55, vis to 1 mile; CAT CD vis to 1½ miles.
** Circling not authorized N of Rwy 10-28 for CAT D.

ALSF-1

MISSED APPROACH: Climb to 800, then climbing left turn to 2000 via SVN VOR/DME R-201 to WOHPY/11 DME and hold.

ATIS ★ 127.525 323.125	SAVANNAH APP CON ★ 120.4 353.775	TOWER ★ 124.975 (CTAF) 279.575	GND CON ★ 121.8 291.675
----------------------------------	--	--	-----------------------------------



800 2000 WOHPY SVN 11

SVN R-201

SVN 1.9

SVN VOR/DME

OYOSA SVN 0.9

SVN 1.9

282°

1800

2000

BULCA SVN 11

IYOPE SVN 6

3.05°

TCH 54

0.2

5.1 NM

CATEGORY	A	B	C	D
S-28*	580/24 539 (600-½)		580/55 539 (600-1)	
CIRCLING**	600-1 559 (600-1)		920-2½ 879 (900-2½)	920-2¾ 879 (900-2¾)

ELEV 41 TDZE 41

VOR/DME RWY 28

SE-4, 07 AUG 2025 to 04 SEP 2025

SE-4, 07 AUG 2025 to 04 SEP 2025