

RNAV (GPS) RWY 28

WAAS CH 82111 W28A	APCH CRS 276°	Rwy Idg 11,393 TDZE 41 Arpt Elev 41
--	-------------------------	--

[USA]

HUNTER AAF (KSVN)

RNP APCH-GPS

▼ *When ALS inop, increase RVR to 40, vis to ¾ mile.
** When ALS inop, increase vis 1½ miles.
*** When ALS inop, increase CAT AB RVR to 55, vis to 1 mile;
CAT CD vis to 1½ miles.
**** Circling not authorized N of Rwy 10-28 for CAT D.

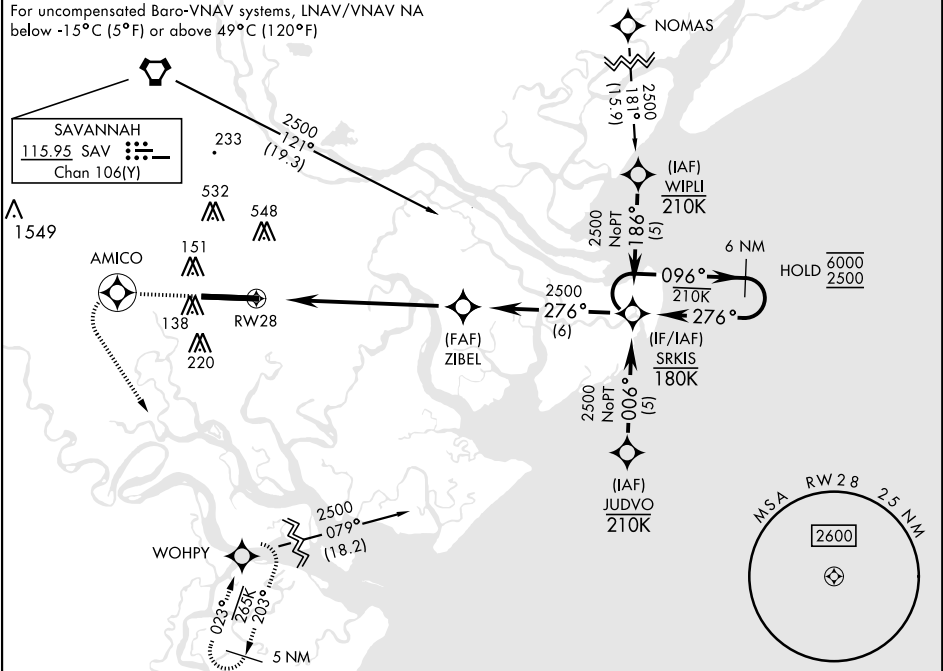
ALSF-1



MISSED APPROACH: Climb to 2000 direct AMICO and left turn on track 180° to WOHPY and hold.

ATIS ★ 127.525 323.125	SAVANNAH APP CON ★ 120.4 353.775	TOWER ★ 124.975 (CTAF) 0 279.575	GND CON ★ 121.8 291.675
----------------------------------	--	--	-----------------------------------

For uncompensated Baro-VNAV systems, LNAV/VNAV NA below -15°C (5°F) or above 49°C (120°F)



2000	AMICO	tr 180°	ELEV 41	TDZE 41
CATEGORY	A	B	C	D
LPV DA*	241/24		200	(200-½)
LNAV/** VNAV DA	487/45		446	(500-¾)
LNAV MDA	620/24	579 (600-½)	620-1¼	579 (600-1¼)
CIRCLING ****	620-1	579 (600-1)	920-2½ 879 (900-2½)	920-2¾ 879 (900-2¾)

RNAV (GPS) RWY 28

SE-4, 07 AUG 2025 to 04 SEP 2025

SE-4, 07 AUG 2025 to 04 SEP 2025