

RNAV (GPS) RWY 10

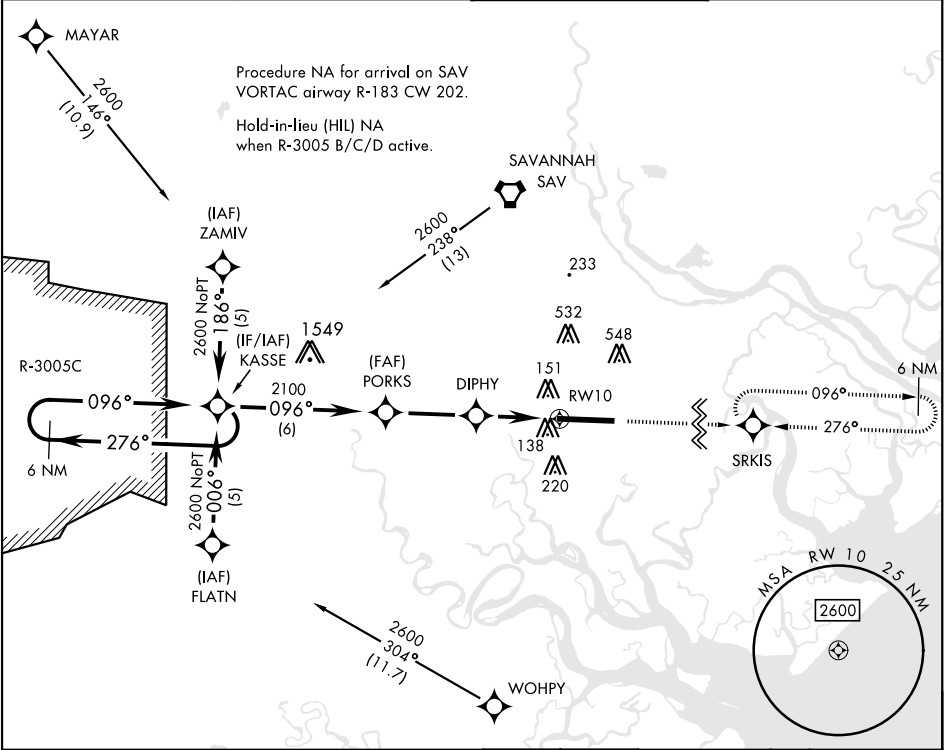
APCH CRS	Rwy ldg
096°	11.393
TDZE	26
Arpt Elev	41

[USA]

HUNTER AAF (KSVN)

RNP APCH-GPS	<div><div></div><div></div></div>	MISSED APPROACH: Climb to 2500 direct SRKIS and hold.
RADAR required when R-3005 B/C/D active.		
<div><div></div><div>*When ALS inop, increase CAT AB vis to 1 mile; CAT CD vis to 1½ miles.</div><div>**Circling not authorized N of Rwy 10-28 for CAT D.</div></div>		

ATIS★	SAVANNAH APP CON★	TOWER★	GND CON★
127.525 323.125	120.4 353.775	124.975 (CTAF) 0 279.575	121.8 291.675



6 NM Holding Pattern KASSE		2500	SRKIS	ELEV 41	TDZE 26
2600 276° 096° 2100 096° 3.05° TCH 55 1040 3.3 NM 3 NM 1.1 NM to RW10					
CATEGORY	A	B	C	D	
LNAV MDA*	460-1	434	(500-1)		
CIRCLING**	600-1	559 (600-1)	920-2½ 879 (900-2½)	920-2¾ 879 (900-2¾)	REIL Rwy 10 0 HIRL Rwy 10-28 0

RNAV (GPS) RWY 10

SE-4, 07 AUG 2025 to 04 SEP 2025

SE-4, 07 AUG 2025 to 04 SEP 2025