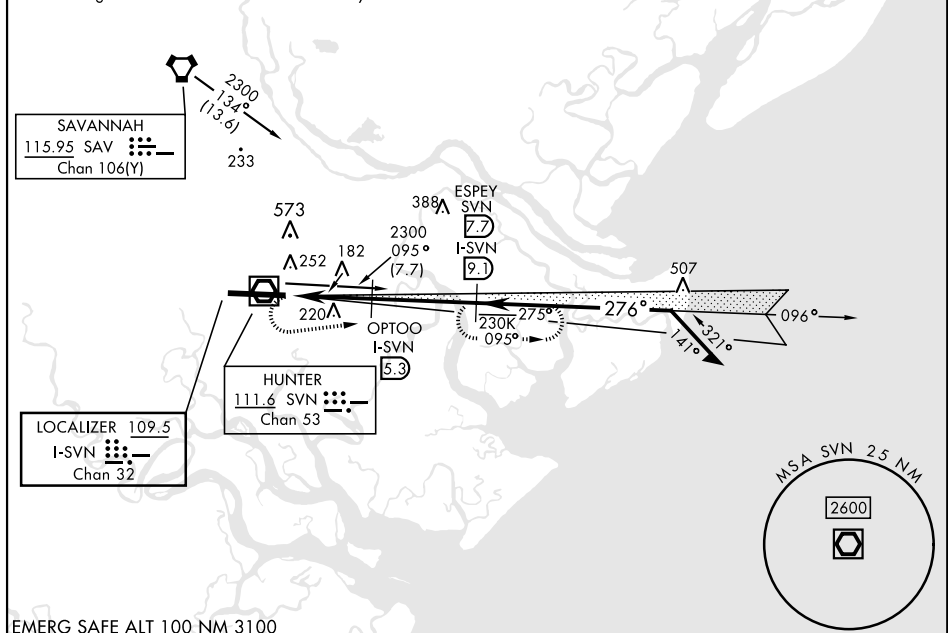


ILS or LOC RWY 28

LOC/DME 1-SVN 109.5 Chan 32	APCH CRS 276°	Rwy Idg 11,393 TDZE 41 Arpt Elev 41	[USA]	HUNTER AAF (KSVN)
DME required ▽ * When ALS inop, increase RVR to 40, vis to $\frac{3}{4}$ mile. ** When ALS inop, increase CAT AB RVR to 55, vis to 1 mile, CAT CD vis to $\frac{1}{4}$ miles. *** When ALS inop, increase CAT AB RVR to 55, vis to 1 mile, CAT CD vis to $\frac{1}{8}$ miles.			ALSF-1 	MISSED APPROACH: Climb to 1000, then climbing left turn to 2300 heading 050° and on SVN VOR/DME R-095 to ESPEY/ SVN 7.7 DME and hold.

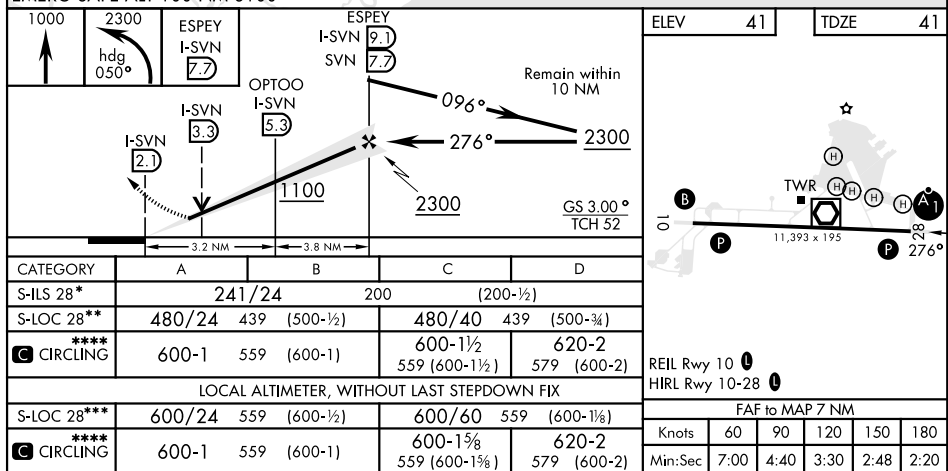
<p>ATIS ★</p> <p>127.525 323.125</p>	<p>SAVANNAH APP CON ★</p> <p>120.4 353.775</p>	<p>TOWER ★</p> <p>124.975 (CTAF) 0 279.575</p>	<p>GND CON ★</p> <p>121.8 291.675</p>
--------------------------------------	--	--	---------------------------------------

**** Circling not authorized for CAT CD N of Rwy 10-28.



SE-4, 07 AUG 2025 to 04 SEP 2025

EMERG SAFE ALT 100 NM 3100



SAVANNAH, GEORGIA | A

32°01'N-81°09'W

HUNTER AAF (KSVN)

Amdt 5 05SEP24

ILS or LOC RWY 28