

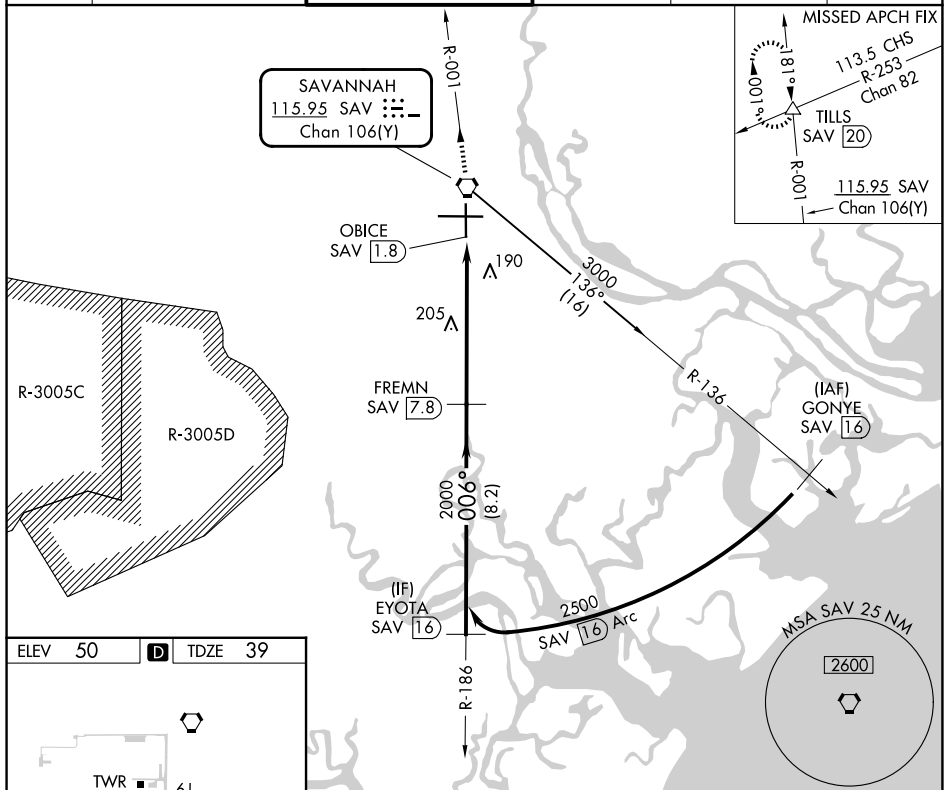
25219

VOR/DME or TACAN RWY 1  
SAVANNAH/HILTON HEAD INTL (SAV)

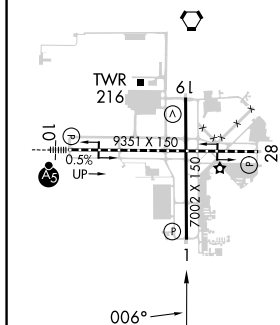


**MISSED APPROACH:** Climb to 4000 direct SAV VORTAC and via SAV R-001 to TILLS INT/SAV 20 DME and hold.

ATIS 123.75	SAVANNAH APP CON ★ 125.3 371.875	SAVANNAH TOWER★ 125.975 (CTAF) 0 257.8	GND CON 121.9 348.6	CLNC DEL 119.55 291.775	UNICOM 122.95
----------------	-------------------------------------	---	------------------------	----------------------------	------------------



ELEV	50	<b>D</b>	TDZE	39
------	----	----------	------	----



TDZ/CL Rwy 10  
REIL Rwys 19 and 28 **L**  
HIRL Rwys 1-19

4000

↑

SAV

SAV R-001

TILLS

△

SAV VORTAC

OBICE SAV 1.8

SAV 3.1

FREMNM SAV 7.8

EYOTA SAV 16

2500

2000

006°

2.98°

TCH 74

1.3 NM

4.7 NM

8.2 NM

Procedure Turn NA

CATEGORY	A		B		C	D	E
S-1	520/55 481 (500-1)		520-1 <sup>3</sup> / <sub>8</sub> 481 (500-1 <sup>3</sup> / <sub>8</sub> )		520-1 <sup>1</sup> / <sub>2</sub> 481 (500-1 <sup>1</sup> / <sub>2</sub> )	520-1 <sup>3</sup> / <sub>4</sub> 481 (500-1 <sup>3</sup> / <sub>4</sub> )	
CIRCLING	520-1 470 (500-1)		740-2 690 (700-2)		740-2 <sup>1</sup> / <sub>4</sub> 690 (700-2 <sup>1</sup> / <sub>4</sub> )	900-3 850 (900-3)	

SAVANNAH, GEORGIA  
Orig-E 10SEP20

32°08'N-81°12'W

SAVANNAH/HILTON HEAD INTL (SAV)  
VOR/DME or TACAN RWY 1

SE-4, 07 AUG 2025 to 04 SEP 2025