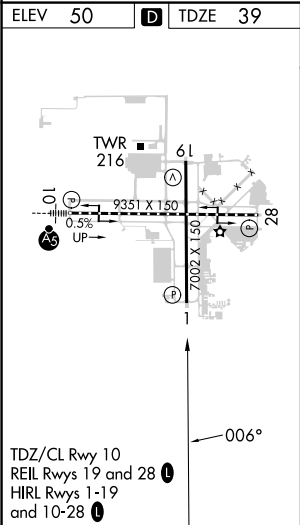
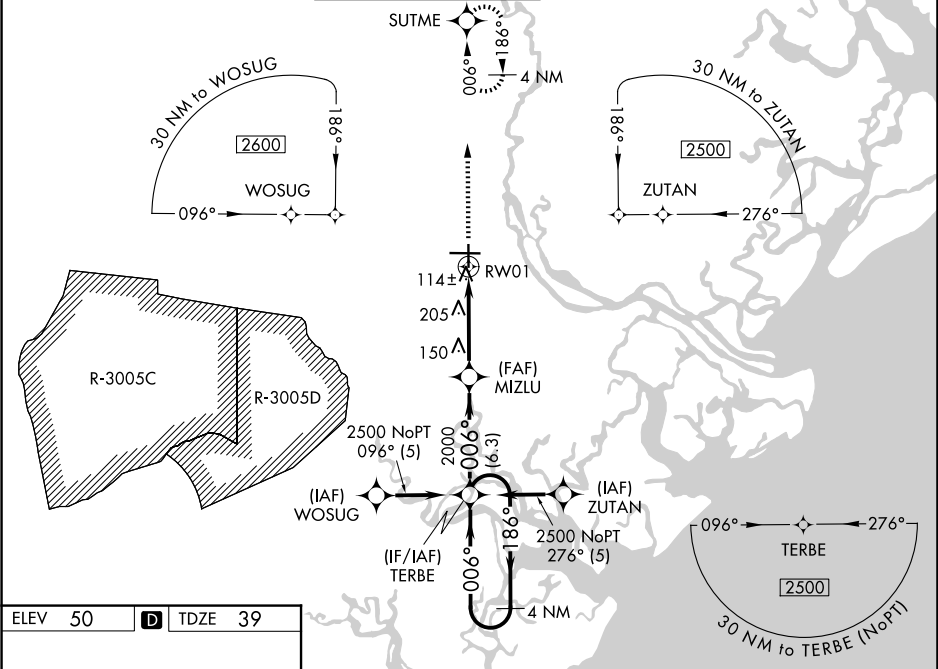


WAAS CH <b>45515</b> <b>W01A</b>	APP CRS <b>006°</b>	Rwy Ldg <b>7002</b> TDZE <b>39</b> Apt Elev <b>50</b>
--	------------------------	---

RNAV (GPS) RWY 1

SAVANNAH/HILTON HEAD INTL (SAV)

RNP APCH.			MISSED APPROACH: Climb to 2500 direct SUTME and hold.		
For uncompensated Baro-VNAV systems, LNAV/VNAV NA below -15°C (5°F) or above 49°C (120°F).					
ATIS 123.75	SAVANNAH APP CON★ 125.3 371.875	SAVANNAH TOWER★ 125.975 (CTAF) 0 257.8	GND CON 121.9 348.6	CLNC DEL 119.55 291.775	UNICOM 122.95



2500	SUTME	VGSI and RNAV glidepath not coincident (VGSI Angle 3.00/TCH 74).		TERBE	4 NM Holding Pattern
*LNNAV only.		MIZLU	2000	186°	2500
*1.3 NM to RWY01		2000	006°	006°	GP 3.00° TCH 57
1.3 NM		4.6 NM	6.3 NM		
CATEGORY	A	B	C	D	
LPV DA	239/40		200 (200-¾)		
LNNAV/VNAV DA	384/60		345 (400-1¼)		
LNNAV MDA	520/55	481 (500-1)	520-1⅓	481 (500-1⅓)	
CIRCLING	520-1	470 (500-1)	740-2 690 (700-2)	740-2¼ 690 (700-2¼)	