

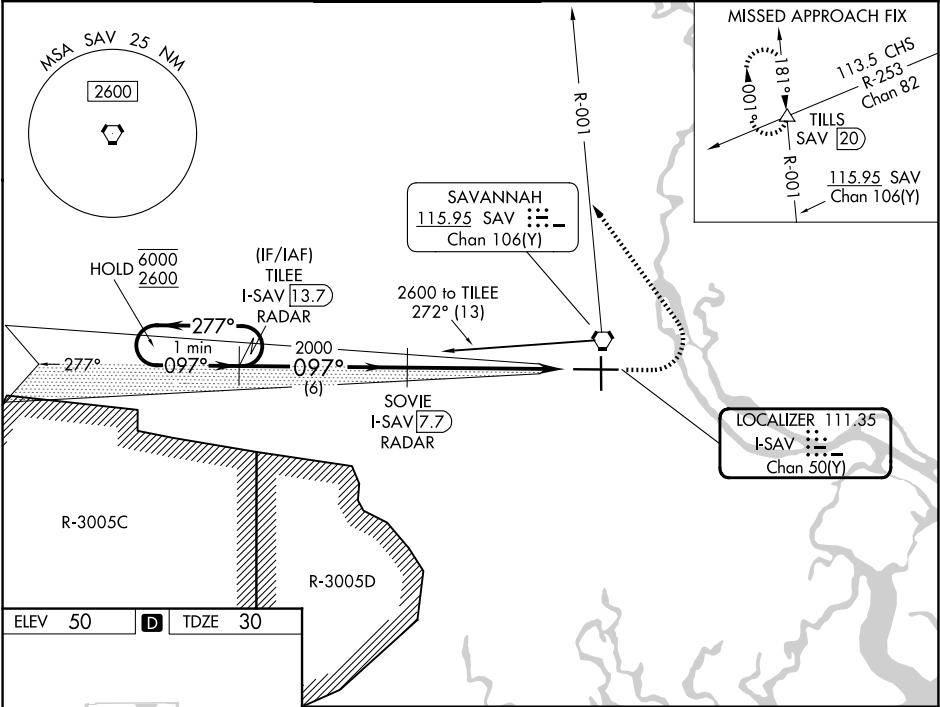
LOC I-SAV 111.35	APP CRS 097°	Rwy Ldg TDZE 30
Chan 50(Y)		Apt Elev 50

ILS or LOC RWY 10

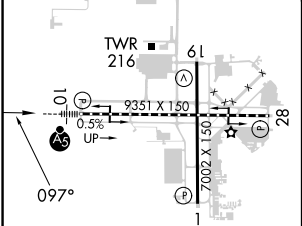
SAVANNAH/HILTON HEAD INTL (SAV)

DME required.	MALSR	MISSED APPROACH: Climb to 800 then climbing left turn to 4000 on heading 330° and SAV VORTAC R-001 to TILLS INT/SAV 20 DME and hold.
<div><div></div><div>For inop ALS, increase S-LOC 10 Cat C/D visibility to 1 3⁄8 SM.</div></div>	<div><div></div></div>	

ATIS 123.75	SAVANNAH APP CON★ 125.3 371.875	SAVANNAH TOWER★ 125.975 (CTAF) 0 257.8	GND CON 121.9 348.6	CLNC DEL 119.55 291.775	UNICOM 122.95
-----------------------	---	--	-------------------------------	-----------------------------------	-------------------------



ELEV 50	D	TDZE 30
----------------	----------	----------------



One Minute Holding Pattern	TILEE I-SAV 13.7 RADAR	SOVIE I-SAV 7.7 RADAR	800 4000 hdg 330°	SAV R-001	TILLS △
	VGSI and ILS glidepath not coincident (VGSI Angle 3.00/TCH 69).				
6000 2600	277° 097°	2000 097°	*I-SAV 3 *LOC only		
GS 3.00° TCH 50	2000	2000			
	6 NM	4.7 NM	1.3 NM		
CATEGORY	A	B	C	D	
S-ILS 10	230/18 200 (200-1⁄2)				
S-LOC 10	500/24	470 (500-1⁄2)	500/50	470 (500-1)	
CIRCLING	520-1	470 (500-1)	740-2 690 (700-2)	740-2 1⁄4 690 (700-2 1⁄4)	

TDZ/CL Rwy 10
REIL Rwy 19 and 28 0
HIRL Rwy 1-19 and 10-28 0