

LOC I-TPV

111.9

APP CRS

006°

Rwy Ldg

7002

TDZE

39

Apt Elev

50

ILS or LOC RWY 1

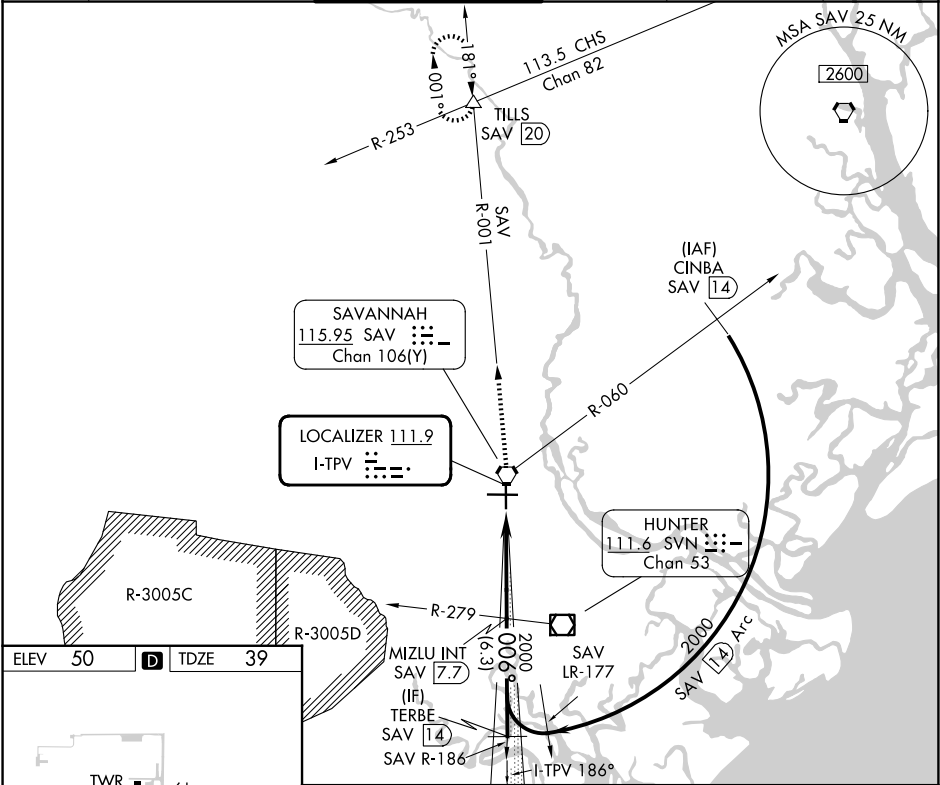
SAVANNAH/HILTON HEAD INTL (SAV)

DME or RADAR required for procedure entry.

MISSED APPROACH: Climb to 1000 then climb to 4000 on SAV VORTAC R-001 to TILLS INT/SAV 20 DME and hold.

Autopilot coupled approach NA below 600.

ATIS 123.75	SAVANNAH APP CON★ 125.3 371.875	SAVANNAH TOWER★ 125.975 (CTAF) 0 257.8	GND CON 121.9 348.6	CLNC DEL 119.55 291.775	UNICOM 122.95
----------------	------------------------------------	---	------------------------	----------------------------	------------------



ELEV 50 TDZE 39

TWR 216

9351 X 150

0.5%

UP

006°

TDZ/CL Rwy 10

REIL Rwy 19 and 28

HIRL Rwy 1-19 and 10-28

FAF to MAP 5.9 NM

Knots

60 90 120 150 180

Min:Sec

5:54 3:56 2:57 2:22 1:58

1000 4000 TILLS

SAV R-001

VGSI and ILS glidepath not coincident (VGSI Angle 3.00/TCH 74).

MIZLU INT SAV 7.7

TERBE SAV 14

\*LOC Only.

SAV 1.8

\*SAV 3

2000

006°

2000

GS 3.00° TCH 57

1.2 NM 4.7 NM 6.3 NM

CATEGORY	A	B	C	D
S-ILS 1	239/40	200 (200-¾)		
S-LOC 1	480/55 441 (500-1)	480-1⅓ 441 (500-1⅓)		
CIRCLING	520-1 470 (500-1)	740-2 690 (700-2)	740-2¼ 690 (700-2¼)	