

APP CRS
316°

Rwy Idg
TDZE
Apt Elev

8004
261
261

SANTA MARIA PUB/CAPT G ALLAN HANCOCK FLD (SMX)

RNAV (GPS) RWY 30

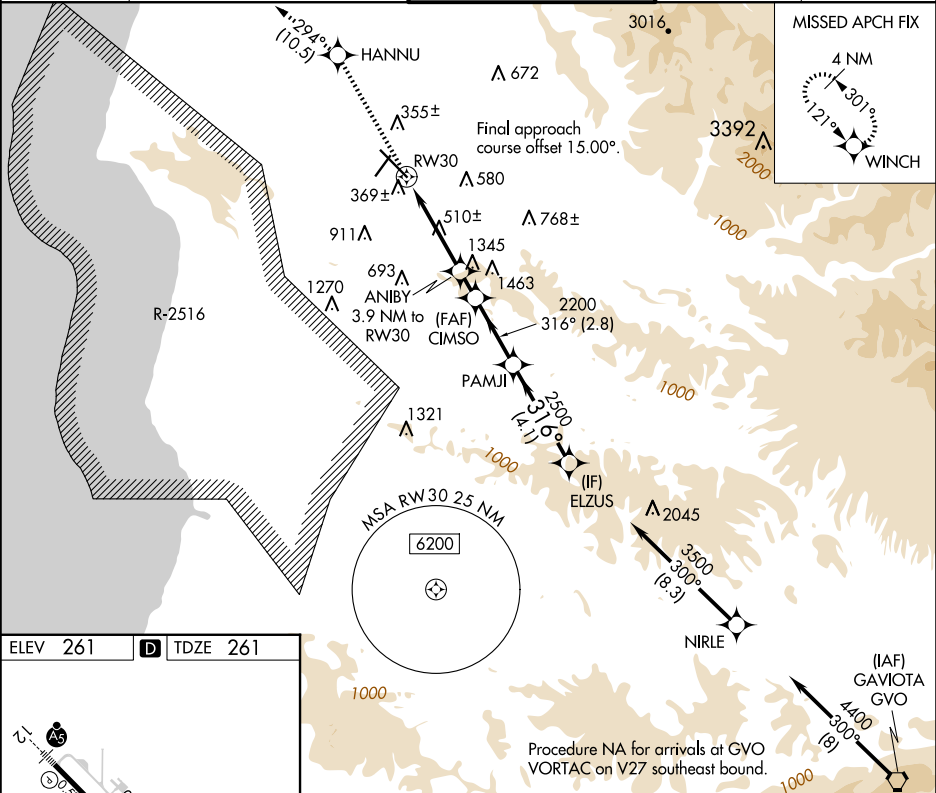
⚠

DME/DME RNP-0.3 NA. When local altimeter setting not received, use San Luis Obispo County Rgnl altimeter setting and increase all MDA 60 feet. Rwy 30 helicopter visibility reduction below 1 SM NA. Straight-in Rwy 30 NA at night, Circling Rwy 2, 30 NA at night.

MISSED APPROACH:

Climb to 4000 direct HANNU and on track 294° to WINCH and hold.

ATIS 121.15	SANTA BARBARA APP CON ★ 124.15 327.8	SANTA MARIA TOWER ★ 118.3 (CTAF) 239.25	GND CON 121.9	UNICOM 122.95
----------------	---	--	------------------	------------------



ELEV 261

TDZE 261

HIRL Rwy 12-30

316°

4000

HANNU

WINCH

Visual Segment - Obstacles.

ELZUS

↑

tr 294°

ANIBY 3.9 NM to RW30

CIMSO

PAMJI

316°

3500

RW30

1780

2200

2500

3.9 NM

1.1 NM

2.8 NM

4.1 NM

CATEGORY	A	B	C	D
LNAV MDA	1600-1¼ 1339 (1400-1¼)	1600-1½ 1339 (1400-1½)	1600-3 1339 (1400-3)	NA
CIRCLING	1600-1¼ 1339 (1400-1¼)	1600-1½ 1339 (1400-1½)	1600-3 1339 (1400-3)	NA