

| | | |
|------------|---------|-------------|
| VORTAC GVO | APP CRS | Rwy Ldg |
| 113.8 | 280° | 6052 |
| Chan 85 | | TDZE 14 |
| | | Apt Elev 14 |

VOR RWY 25

SANTA BARBARA MUNI (SBA)

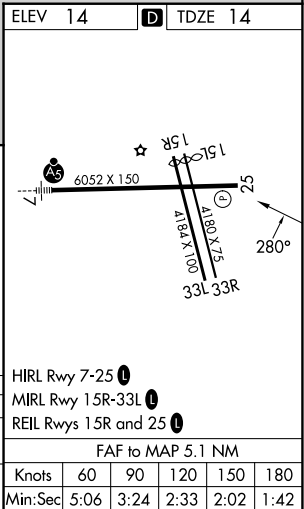
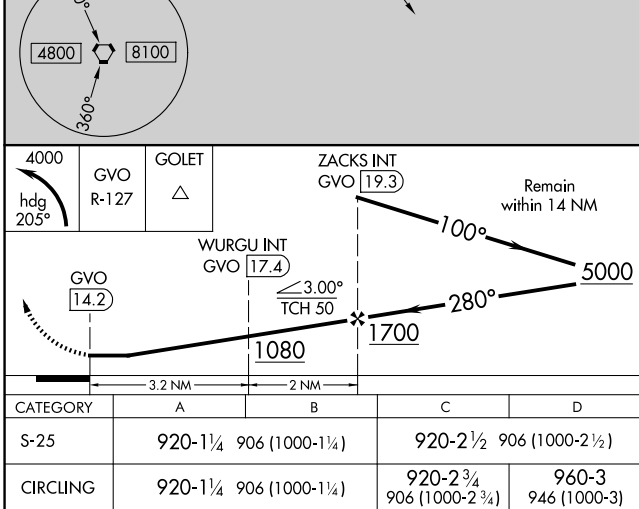
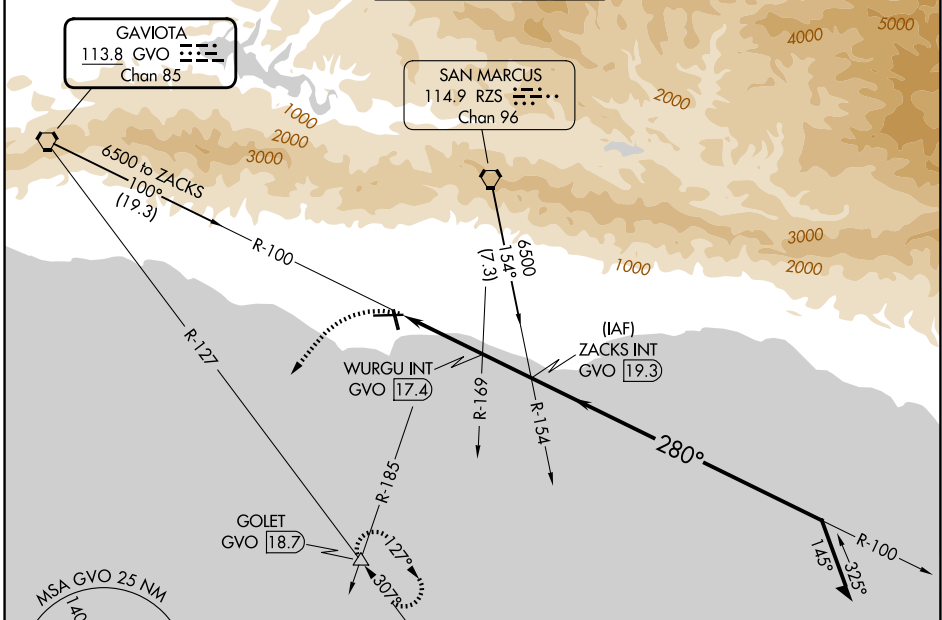
⚠

⚠

Circling Rwy 15L/R and 33L/R NA at night. Rwy 25 helicopter visibility reduction below 1 SM NA. Circling NA for Cats C and D north of Rwy 7-25. Procedure NA at night. When local altimeter setting not received, use OXR altimeter setting and increase all MDAs 100 feet and S-25 visibility Cat B/C/D ½ SM and Circling visibility Cat B/C ¼ SM.

MISSED APPROACH: Climbing left turn to 4000 on heading 205° and GVO R-127 to GOLET INT and hold, continue climb-in-hold to 4000.

| | | | | | |
|--------|--|-----------------------|---------|----------|--------|
| ATIS | SANTA BARBARA APP CON* | SANTA BARBARA TOWER* | GND CON | CLNC DEL | UNICOM |
| 132.65 | 120.55 319.15 (151°-329°) 125.4 291.1 (330°-150°) | 119.7 (CTAF) 0 254.35 | 121.7 | 132.9 | 122.95 |



SW-3, 07 AUG 2025 to 04 SEP 2025

SW-3, 07 AUG 2025 to 04 SEP 2025