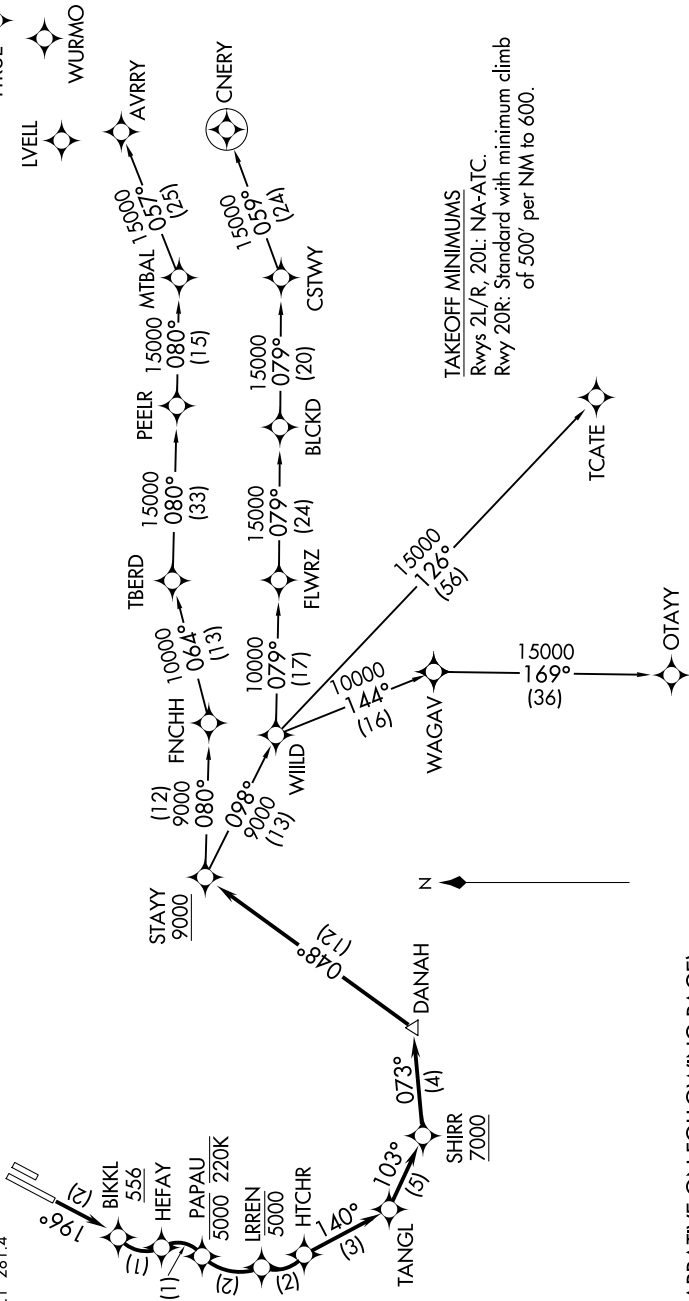


**TOP ALTITUDE:**  
**13000**

NOTE: Chart not to scale.

NOTE: RNP 1.  
NOTE: RF required.  
NOTE: GPS required.  
NOTE: RADAR required.  
NOTE: Turbojet engine.  
NOTE: Parachute required.  
NOTE: Do not fly north of 30°N.

D-ATIS  
1126.0  
CLINC D  
1118.0  
CPDLC  
GND C  
1120.8  
JOHN V  
1126.8  
SOCAL  
1128.1



(NARRATIVE ON FOLLOWING PAGE)

SW-3, 07 AUG 2025 to 04 SEP 2025