

APP CRS
016°

Rwy Idg
5700

TDZE
56

Apt Elev
56

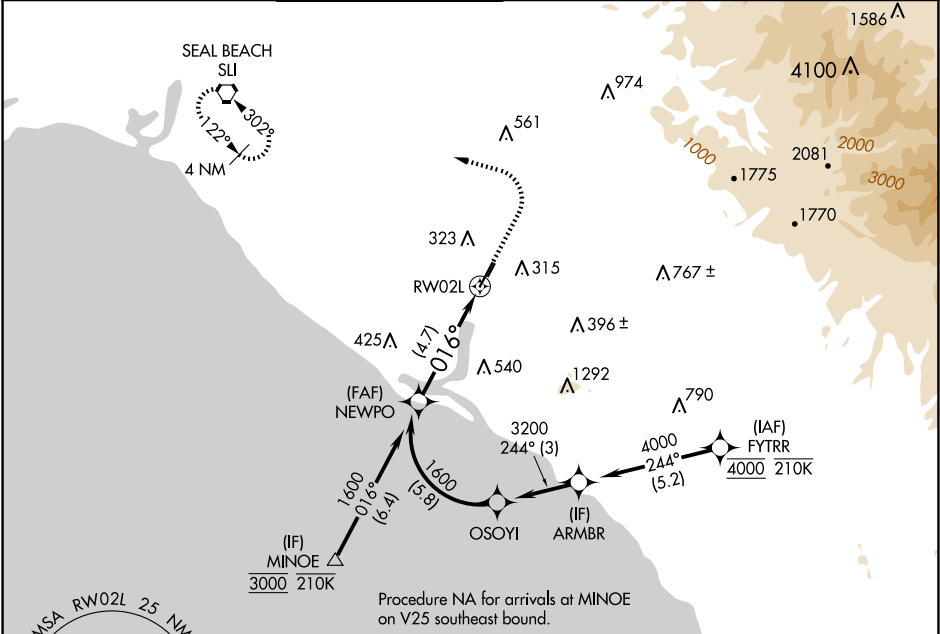
RNAV (RNP) Z RWY 2L

JOHN WAYNE/ORANGE COUNTY (SNA)

RNP AR APCH - GPS. Authorization required. From OSOYI: RF.

MISSED APPROACH: Climb to 800 then climbing left turn to 2600 direct SLI VORTAC and hold.

D-ATIS 126.0	SOCAL APP CON 121.3 263.1	JOHN WAYNE TOWER ★ 126.8 (CTAF) 0 343.625	GND CON 120.8	CLNC DEL 118.0	CPDLC	UNICOM 122.95
------------------------	-------------------------------------	--	-------------------------	--------------------------	-------	-------------------------



ELEV 56

TDZE 56

VGSI and RNAV glidepath not coincident (VGSI Angle 3.00/TCH 75).

NEWPO

1600

GP 3.00°

TCH 55

016°

4.7 NM

See planview for multiple IF locations.

800

2600

SLI

403-1 1/8

347 (400-1 1/8)

AUTHORIZATION REQUIRED

REIL Rwy 20L

MIRL Rwy 2R-20L

HIRL Rwy 2L-20R