

LOC/DME I-SNA 111.75 Chan 54(Y)	APP CRS 196°	Rwy Ldg TDZE 54 Apt Elev 56	5700
---	------------------------	---	-------------

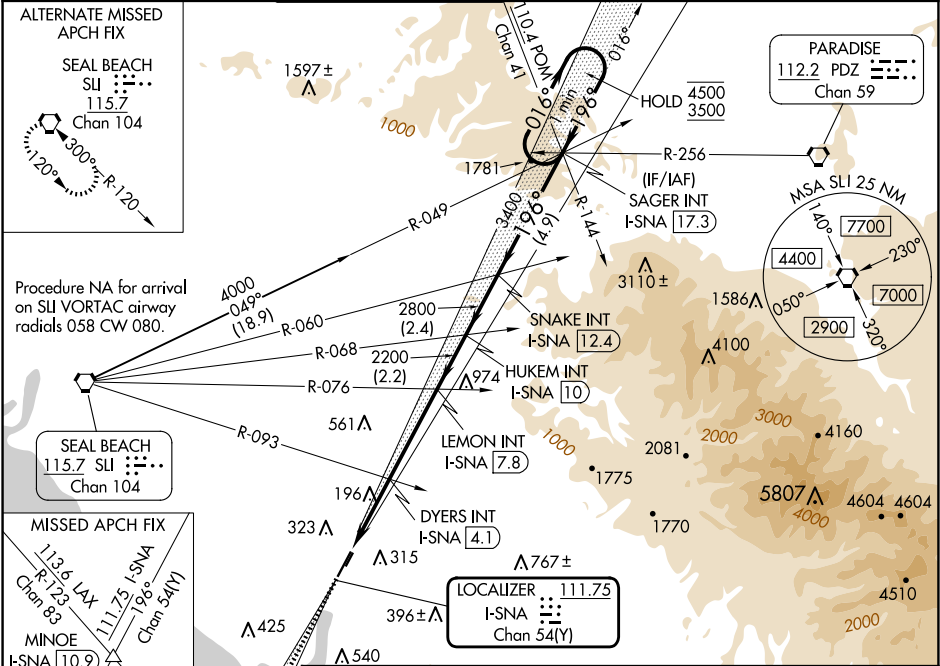
ILS or LOC RWY 20R
JOHN WAYNE/ORANGE COUNTY (SNA)

⚠ Circling Rwy 20L NA at night.
* RVR 1800 authorized with the use of FD or AP or HUD to DA.

MALSR

MISSED APPROACH: Climb to 3000 on I-SNA LOC south course (196°) to MINOE INT/I-SNA 10.9 DME.

D-ATIS 126.0	SOCAL APP CON 121.3 263.1	JOHN WAYNE TOWER ★ 126.8 (CTAF) 343.625	GND CON 120.8	CLNC DEL 118.0	CPDLC	UNICOM 122.95
------------------------	-------------------------------------	---	-------------------------	--------------------------	-------	-------------------------



ELEV 56	TDZE 54	MINOE	VGSI and ILS glidepath not coincident (VGSI Angle 3.00°/TCH 68).	SNAKE INT I-SNA 17.3	SAGER INT I-SNA 17.3
3000		I-SNA S crs (196°)	HUKEM INT I-SNA 10	One Minute Holding Pattern	
196°		I-SNA 1.1	I-SNA 2.4	I-SNA 4.1	I-SNA 7.8
1040		2200	2800	3400	4500
1.3 NM		1.7 NM	3.7 NM	2.2 NM	2.4 NM
1.3 NM		1.7 NM	3.7 NM	2.2 NM	2.4 NM
CATEGORY A B C D					
S-ILS 20R* 255/24 201 (200-½)					
S-LOC 20R 1040/40 986 (1000-¾) 1040/55 986 (1000-1) 1040-2½ 986 (1000-2½)					
CIRCLING 1040-1¼ 984 (1000-1¼) 1040-1½ 984 (1000-1½) 1040-3 984 (1000-3) 1180-3 1124 (1200-3)					
DYERS FIX MINIMUMS (DUAL VOR RECEIVERS OR DME REQUIRED)					
S-LOC 20R 460/24 406 (500-½) 460/40 406 (500-¾)					
CIRCLING 640-1 584 (600-1) 840-2¼ 784 (800-2¼) 1180-3 1124 (1200-3)					